

PointLock PRO User Guide

Ver 3.5

Manufacturer : Ahranta, Inc.

■ Notice

Copyright © 1991 Ahranta, Inc. All Rights Reserved

The contents of this user guide can be changed without notice due to the performance upgrade and functional improvement of the product.

Ahranta, Inc. does not give any guarantee about the marketability and suitability except the purposes explained in this user guide, and takes no responsibility for any direct, indirect, accidental or inevitable loss occurred from the errors in this user guide or from the supply, implementation and use of this material.

Ahranta, Inc. has a copyright and intellectual property right about the user guide, and these rights are protected by the copyright law in Korea and international copyright treaty. Therefore, it violates the copyright law to copy and reprint the part or all contents of this user guide without a prior agreement of Ahranta, Inc.

Microsoft® Windows XP / Windows Vista / Windows 7 / Windows Server 2003 / Windows Server 2008 are the registered trademarks of another company, and are protected by copyrights. Other registered trademarks of another company and the terminologies protected by copyrights are used just for citation and reference.

- 2012. 11. 26. Ahranta, Inc.

■ Table of Contents

■ PointLock PRO Overview	
1. Outline.....	3
2. Features.....	4
3. System Specifications.....	5
■ Installing PointLock PRO	
1. Product Registration	6
2. Installation.....	8
■ Launching PointLock PRO	
1. Launch	12
■ How to use PointLock PRO	
1. Lock(Hide) the Folder(s) and View the Locked Folder List	16
2. Unlock the Folder(s).....	21
3. Encrypt the File(s).....	23
4. Decrypt the File(s).....	26
5. Encrypt the Sharable File.....	29
6. Decrypt the Sharable File.....	31
7. Lock/Unlock the Network.....	32
8. Set the Screen Saver and revocation.....	37
9. Configuration.....	40
10. Creating a new file inside the Locked folder(Shell feature).....	42
11. Free move and copy of files with Windows.....	45
12. Close the PointLock PRO.....	45
■ Caution	46
■ Deleting PointLock PRO.....	48
■ Technical Support.....	51

■ PointLock PRO Overview

1. Outline

One of the biggest issues about the latest internet industry is hacking and security. Illegal leak of personal information and confidential data which have continuously hit the headlines in the newspapers and the news are becoming important problems for companies and individuals. For this reason, many companies have established the intrusion checking devices to stop the intrusion of the outsiders as well as the firewalls to prevent the hackers' access. However, there are huge cost burden and installation complexities, and they have limits of becoming helpless for the intrusion of inside enemies.

The program which could replace these systems and also gives a powerful synergy is PointLock PRO, a personal information protection program. As a protection program for all sorts of data stored on PC, PointLock PRO blocks the data leak by preparing for the hackers' intrusion through the entire network including the internet, and prevents the system error or arbitrary deletion and change of data by user's mistake or inappropriate uses of other people.

Besides, it can block the system access from other people by hiding important folders and drives on Windows to prepare for the data leak occurring by inappropriate uses of other people. One of the most amazing features of PointLock PRO is to modify a file and create password automatically inside the program when modifying the encrypted file, thus there is no trouble of registering a password again after modifying the file. In other words, if you complete modifying the encrypted file inside PointLock PRO, it is automatically encrypted and saved.

2. Features

① **Lock the Folder(s)**

This is a controlling feature to make folders only usable to a user by hiding folders to prevent other users or intruders from copying and deleting the folders storing important data on user's computer.

② **Encrypt / Decrypt File(s)**

PointLock PRO can encrypt and decrypt all files stored on computer. (avi, bmp, doc, exe, flc, gif, jpg, mp3, pdf, ppt, psd, rar, tar, txt, xls, zip, etc.) Encrypted files can be seen only inside PointLock PRO, and the icon of an encrypted file changes to a unique icon provided by PointLock PRO.

③ **Sharable File(s)**

When transmitting an important file outside, you can encrypt the file and safely transmit and share it. The third party getting the file from the outside can read the file by PointLock Viewer. However, modifying the encrypted file is not possible.

④ **Lock the Network(s)**

Network Lock feature can protect user's computer from threats like hacking, viruses, malicious code access and data leak by blocking the entire network including the internet while the user is running PointLock PRO.

⑤ **Screen Saver**

This is a screen saver feature of PointLock PRO which automatically blocks the network and locks the configured folders immediately in case of not using PointLock PRO during a set amount of time or leaving the computer desk. You can have a separate configuration for a network blocking, and you need a login ID and password to revoke the screen securing mode.

⑥ **View the Locked Folder List**

When hiding folders by a folder securing settings, a user might forget the location of folders since they are not visible on Windows. You can easily modify the locked folder through the feature of secured list viewing.

⑦ **Deletion of the latest documents and internet list**

PointLock PRO has a feature of deleting the document list in Windows Start menu and the visited page list in internet explorer to keep other users from seeing them.

⑧ Security Explorer feature

All features usable in Windows explorer can be used in PointLock PRO. After launching PointLock PRO, you can use various features of Windows explorer such as creating new folders and files, view, alignment, properties, search, copy, cut, paste and delete by clicking the right mouse button just like in explorer. You can use the system (PC, Laptop, etc.) under more convenient security environment.

Besides, free file transfer between Windows and PointLock PRO is possible. You can move and copy files and folders by Drag & Drop from Windows to the security folder just like using Windows Explorer, and by contrary, you can also move and copy files from the security folder to Windows.

3. System Specifications

※ It works OK on the system with low specifications.

CPU	MEMORY	DISK	OS
Pentium processor with 150MHz or faster	32MB or more	20MB space	Windows XP Windows Vista(32/64bit) Windows 7(32/64bit)

■ Installing PointLock PRO

1. Product Registration

(1) Connect to the PointLock PRO homepage (<http://www.pointlock.co.kr>).

POINT LOCK PRO 제품등록 | 구매하기 | 블로그가기 | 고객센터

포인트락 프로 소개 **제품 등록** 다운로드 주요 기능 고객 지원

포인트락프로와 함께 쉽고! 저렴하고! 강력하게! 개인정보보호법을 준수하세요!

√ 2011년 9월 30일자로 시행된 개인정보보호법이 걱정되시는 중소기업 사장님,
√ 사내 기밀 자료 및 개인정보파일을 보안해야 하는 350만 관공서와 기업들,
√ 감추고 싶은 프라이버시의 보호가 필요한 모든 분들께,
"포인트락 프로"를 추천합니다!!

FREE DEMO 제품 구매하기 뷰어 다운로드

평가판 다운 제품 구매하기 뷰어 다운로드

정품 제품 등록
포인트락 프로 정품 등록을 해주세요.

공지사항 MORE

- 공공기관도 개인정보보호 위반시 법적 제재 ... 2011/05/31
- [보도자료] 미리보는 WIS 2011, "... 2011/05/11
- [보도자료] WIS 2011, 지자체관 마... 2011/05/11
- [보도자료] "월드 IT쇼" 서울 구로·마... 2011/05/11

고객센터 안내 GO

포인트락 프로 사용중 궁금한 사항을 해결해 드립니다.
평일 09:00-18:30 (토/일 휴무)
Tel. 02-325-0303

Reference 한국연세중앙교회 서울서문동학교 Healthy 성신여자대학교 U&I SOFT Soft join 서울기술연구원

Ahranta, Inc. (우)121-896, 서울시 마포구 월드컵로88(서교동) 서교월드빌딩 2F, 미란다(주) | 회사소개
대표: 윤상권 | 사업자 등록번호 : 105-81-49044 | 통신판매업 신고번호 : 제 2011-서울마포-0190 호
T, 02)325-0303 | F, 02)326-2940 Copyright © 1991-2011 Ahranta, Inc., All Rights Reserved.

패밀리사이트

Compatible with Windows 7 Microsoft Certified Vista(x32/64), 7(x32/64), Server 2003 / 2008

(2) Click [Product Registration] on the top menu of homepage.

POINT LOCK PRO 제품등록 | 구매하기 | 블로그가기 | 고객센터

포인트락 프로 소개 **제품 등록** 다운로드 주요 기능 고객 지원

포인트락프로와 함께 쉽고! 저렴하고! 강력하게!

- (3) Enter the **'Product Serial Number'** attached to the "Software License Certificate", "PointLock PRO CD-Rom case", or "Serial Number provided via E-mail", and click the **[Authentication]** button.

제품 등록 ▶ 제품 등록 > 제품 등록

- 포인트락 프로 제품등록을 하시면 설치프로그램을 다운로드 받으실 수 있습니다.
- 등록하신 정보는 A/S를 위한 용도로만 사용됩니다.

- 문의사항은 고객센터(02-325-0303)로 연락 주시기 바랍니다.

제품 등록

구입일자 *	<input type="text" value=""/>	(예:2010-06-15)
구입경로 *	-- 선택하세요 --	
이름 *	<input type="text" value=""/>	
상품종류 *	Point Lock Pro	
제품일련번호 *	<input type="text" value=""/>	인증
E-mail *	<input type="text" value=""/>	
회사이름	<input type="text" value=""/>	
전화번호 *	<input type="text" value=""/> - <input type="text" value=""/> - <input type="text" value=""/>	
모바일 *	<input type="text" value=""/> - <input type="text" value=""/> - <input type="text" value=""/>	
우편번호	<input type="text" value=""/> - <input type="text" value=""/>	
주소	<input type="text" value=""/>	
상세주소	<input type="text" value=""/>	

[다음](#)

- (4) Download and install the product.

POINT LOCK PRO

포인트락 프로 소개
제품등록 및 다운로드
평가판 다운로드
고객지원
구매하기

보안폴더 내 신규파일 생성
"간편한 Shell기능"

이제 강력 보안프로그램 포인트락 프로가 완전 차단된 폴더내에서 안전한 문서작업을 도와드립니다.

▶ 제품등록 및 다운로드

포인트락 프로 정품
등록이 완료되었습니다.

다운로드할 포인트락 프로를
선택하여 주세요!

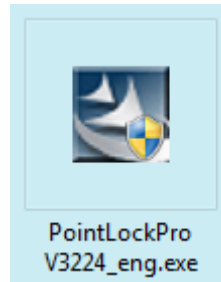
Point Lock PRO 12개월	제품 다운로드
Point Lock PRO 영구사용	제품 다운로드

Customer Center
포인트락 프로 고객센터
02-325-0303

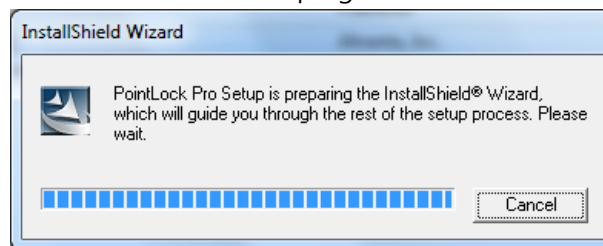
3. Installation

[Caution] – Please terminate all programs currently running before entering the installation process of PointLock PRO. Otherwise, an error might occur after or during the installation.

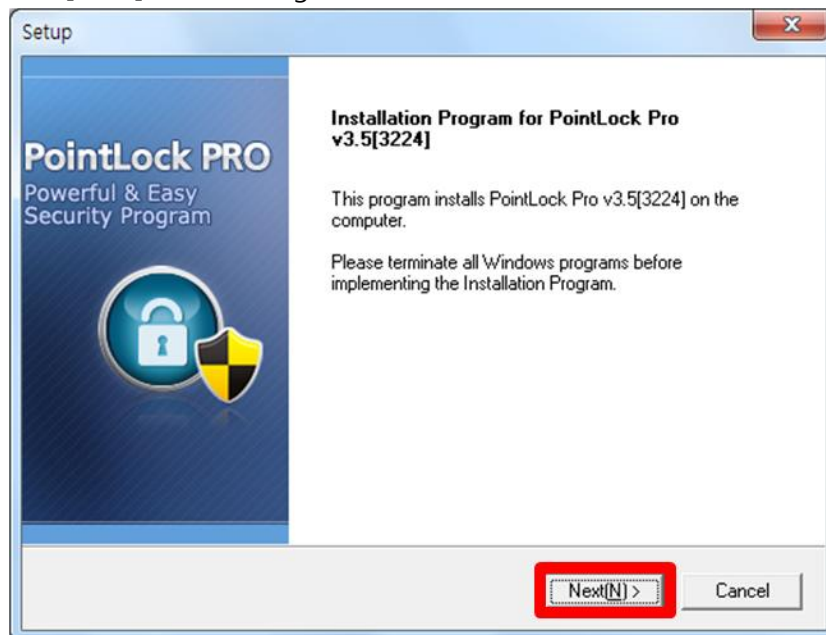
(1) Please launch the “**PointLock PRO installation program(.exe)**” which has been downloaded through PointLock PRO homepage (Product Registration) or email.



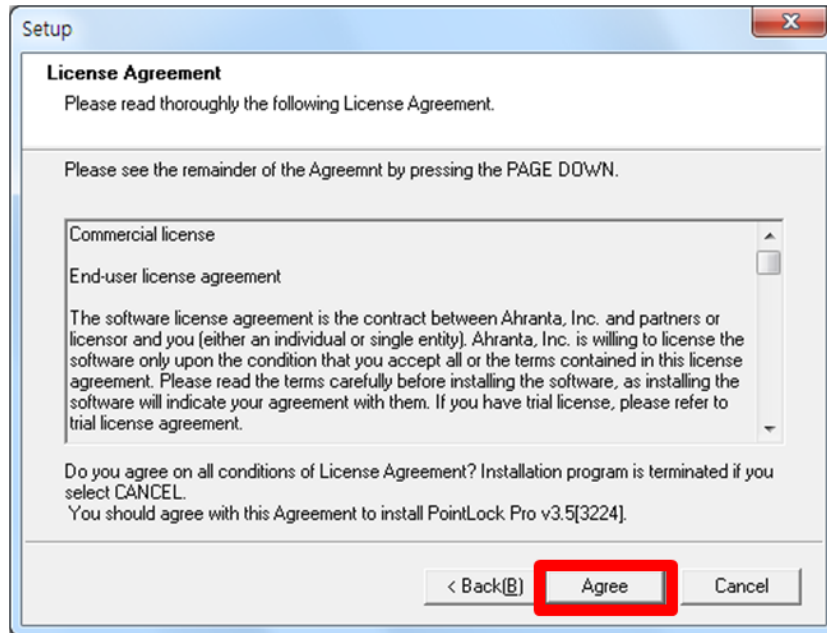
(2) PointLock PRO installShield Wizard is in progress.



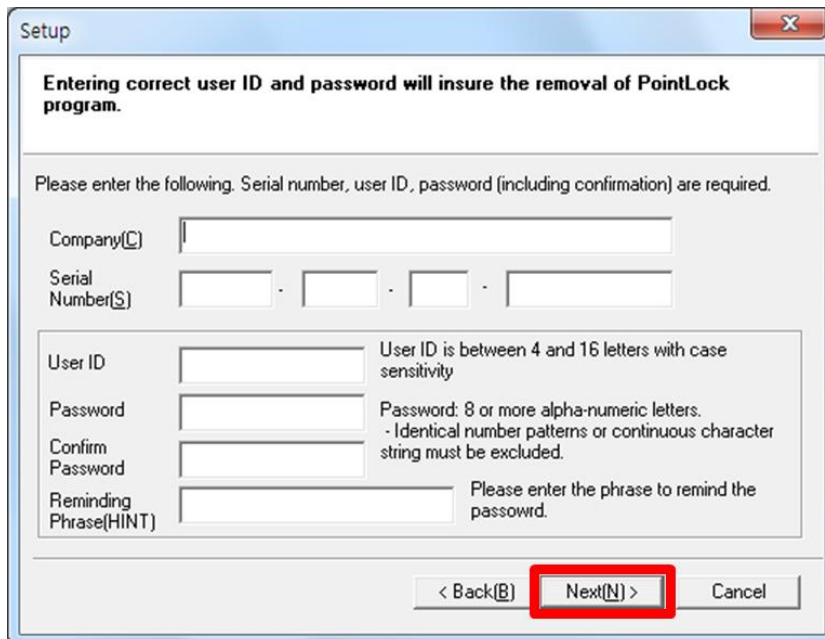
(3) Please click **[Next]** after reading the contents of installation screen.



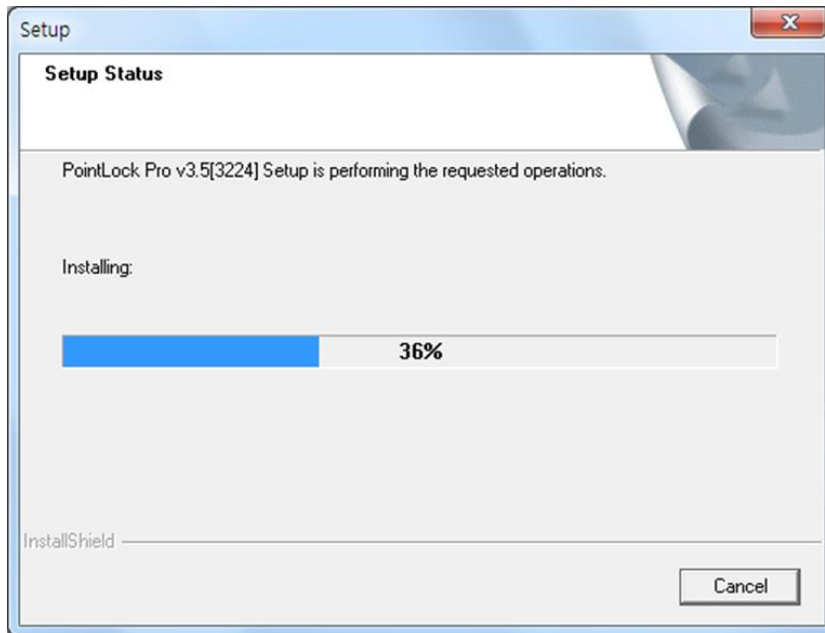
(4) Please make sure to read the License Agreement first, and click **[Agree]** if you agree with the contents.



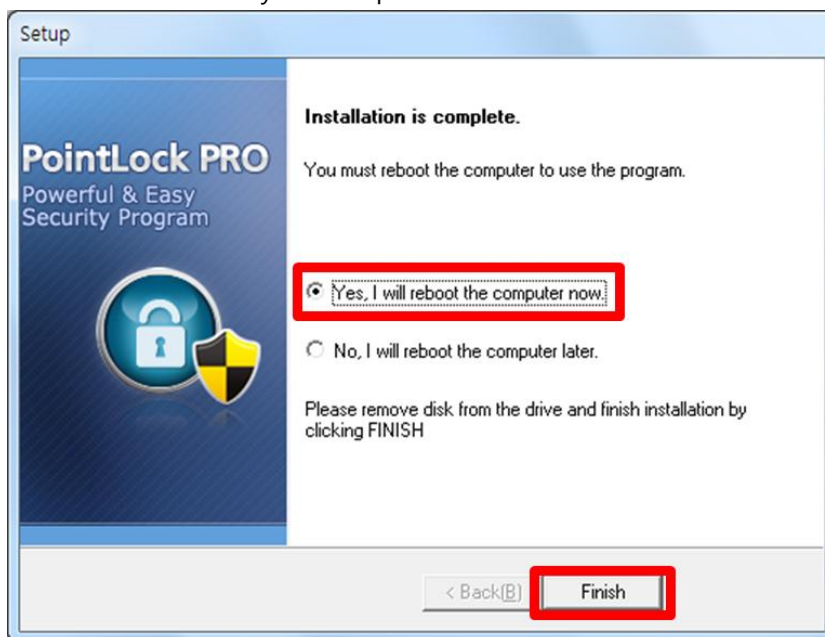
(5) Enter Place (Company or Personal name, Serial Number, User ID, Password, Reminding password(Hint), and click **[Next]**.



(6) PointLock PRO installation is in progress.



(6) Please make sure to reboot your computer after installation is finished.



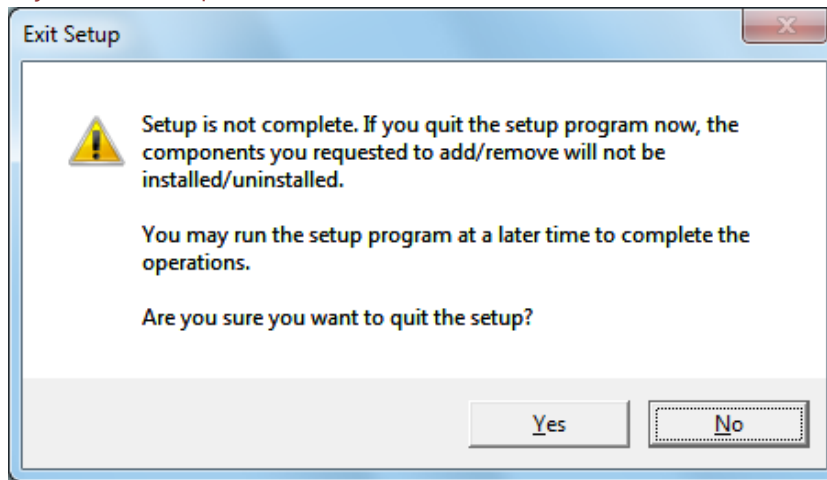
[Caution] – User ID and Password are needed to use and uninstall the program.

[Caution] – User ID and password can be changed in the program after going through the "Menu"> [User Information].

[Caution] – If you click the [Cancel] button, you can't finish the installation.

If you want to ongoing the installation process, click [No].

If you want to quit, click the [Yes].



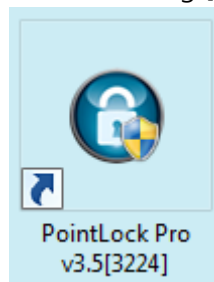
■ Launching PointLock PRO

1. Launch

[Caution] – Since this is a security program, the user can't launch the program unless entering the correct user ID and password.

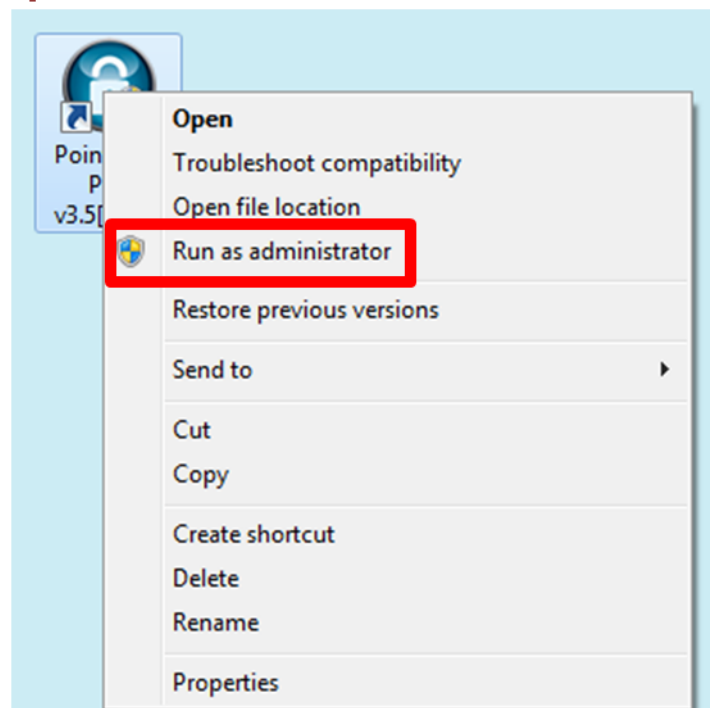
[Caution] – You should make sure to reboot the computer after installing PointLock PRO.

(1) If you install PointLock PRO, **[Shortcut to PointLock PRO icon]** will be created on the wallpaper. Launch the program by double-clicking [PointLock PRO icon].

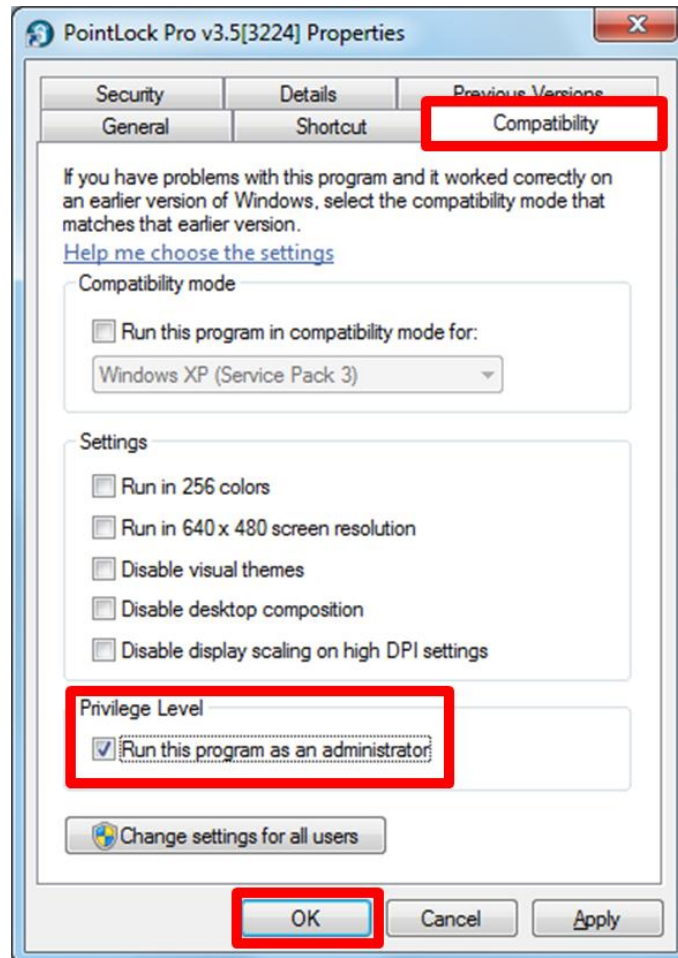
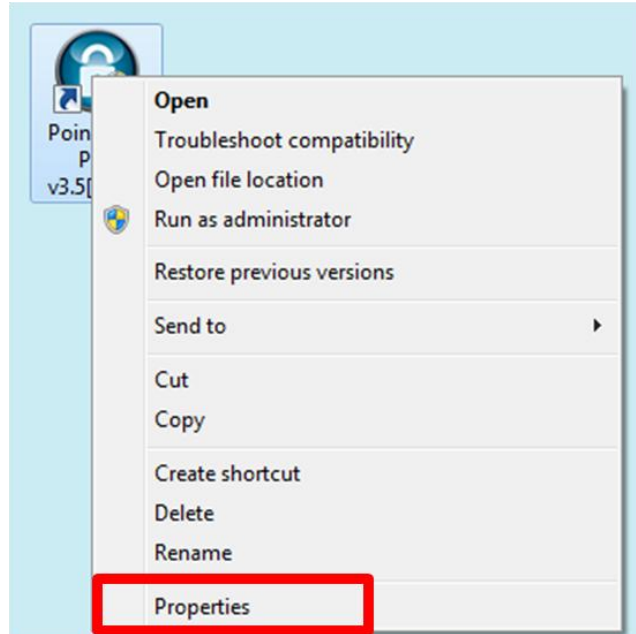


※ **On Windows Vista or Windows 7, you should launch the program with administrative rights.** There are two ways to launch with administrative rights as follows.

- ① After clicking the right mouse button on the [PointLock PRO icon], select **[Run as administrator]**.

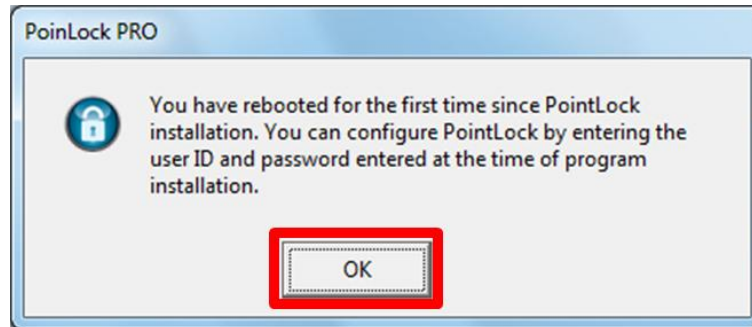


- ② After clicking the right mouse button on the [PointLock PRO icon], select **[Properties]** – **[Compatibility]** – **[Rights Level]**, and check **[Run this program as administrator]**.



One Click Security Program PointLock PRO

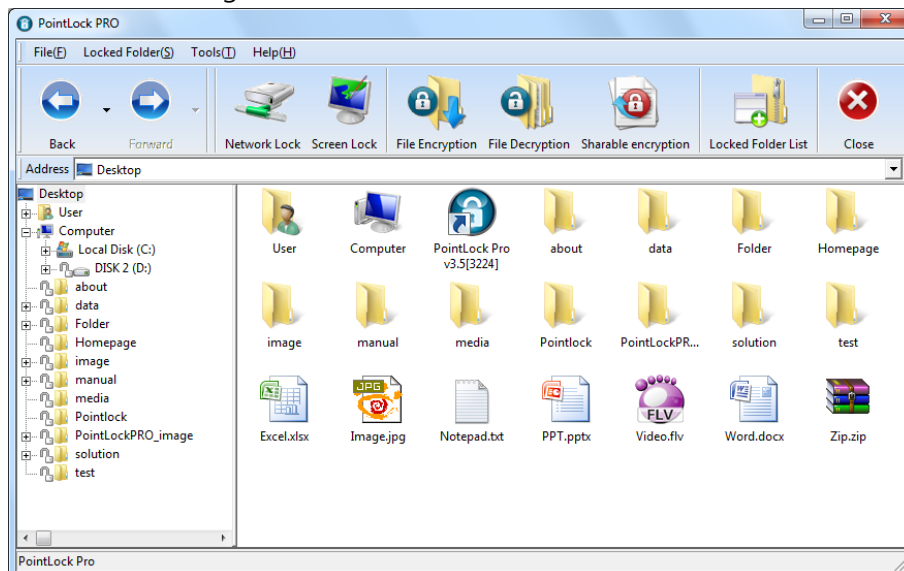
(2) If you launch PointLock PRO for the first time, guidance pop-up like below will be appearing. Click **[OK]**.



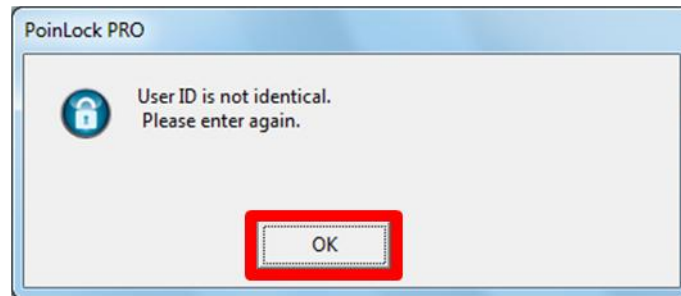
(3) Enter user ID and password established at the time of installation, and click **[Login]**.



(4) PointLock PRO is being launched.



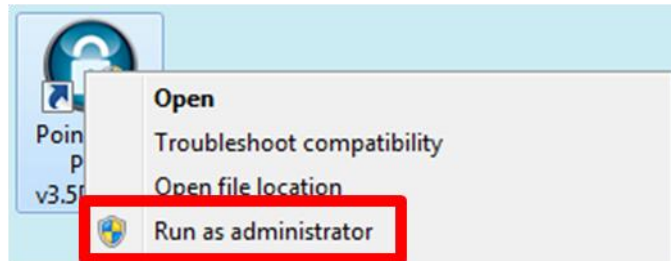
[Caution] – If you enter the wrong user ID and password, there will be a message of "User ID is not identical. Please try again." or "Password is not identical. Please try again." Click the [OK], and please try again with correct ID and Password.



■ How to use PointLock PRO

1. Lock(Hide) the Folder(s) and View the Locked Folder List

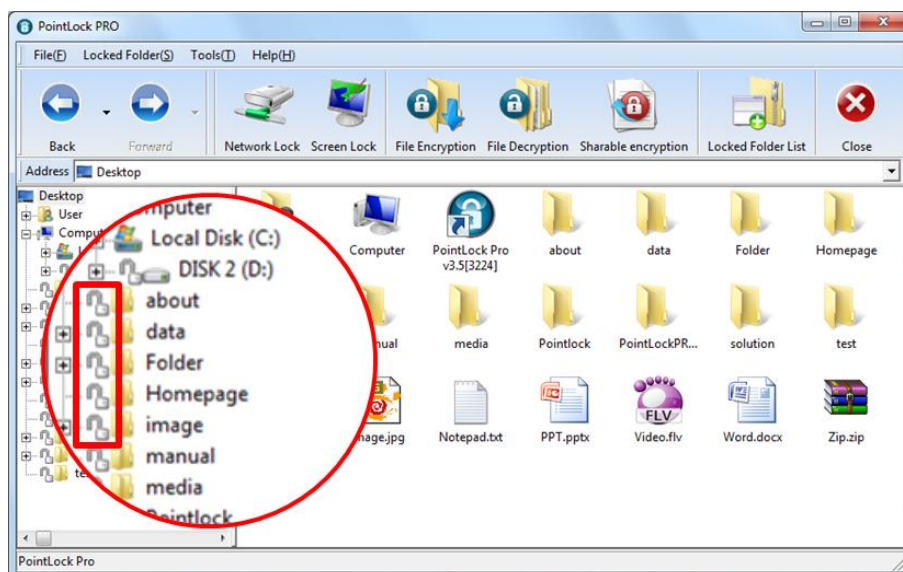
(1) Launch PointLock PRO on the wallpaper with administrative rights.



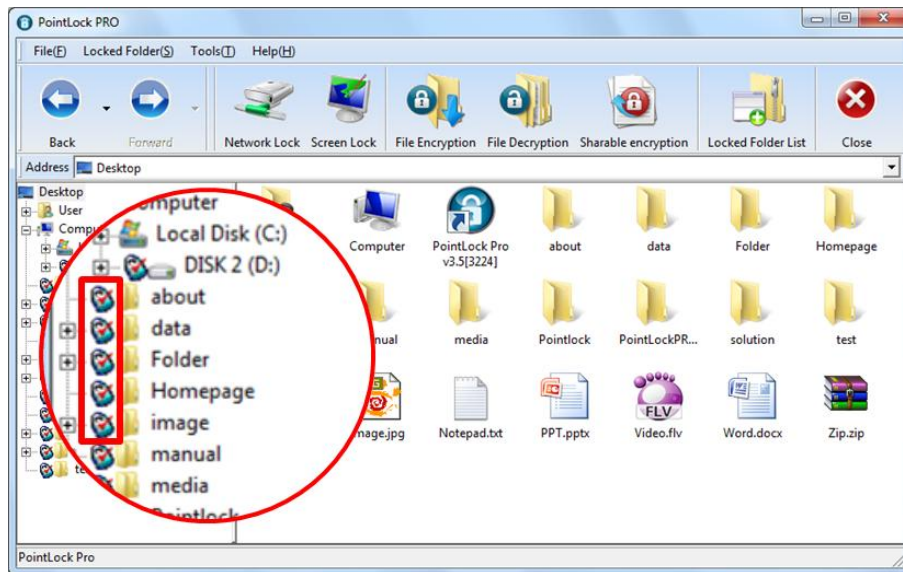
(2) Enter ID and password in the login window, and click **[OK]**.



(3) **One-Click** the **[Unlocked padlock icon]** of the folder you want to hide in the folder tree located on the left of the program.



(4) [Locked padlock icon] is created. At this state, seeing and accessing secured folders from the location (ex: wallpaper) other than PointLock PRO Explorer is impossible.

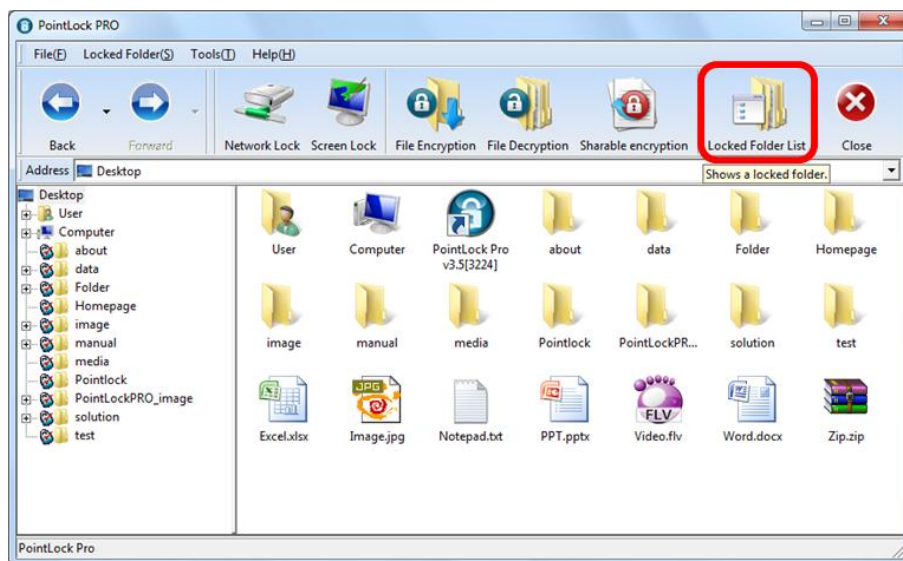


[Tip 1] You can utilize Windows Explorer functions in PointLock PRO. You can work and launch all programs and files in the folders directly inside PointLock PRO.

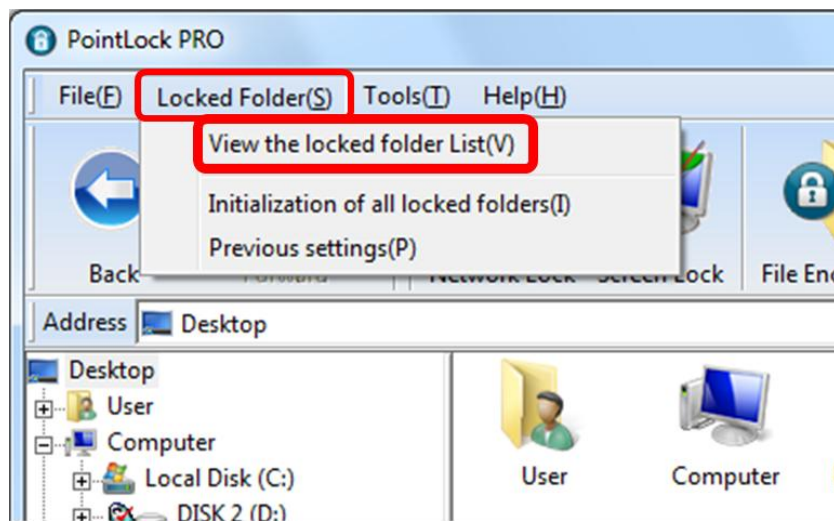
[Tip 2] PointLock PRO can set up folder securing features in all directories where Windows is installed.

(5) There are two ways to see the locked folder list as follows.

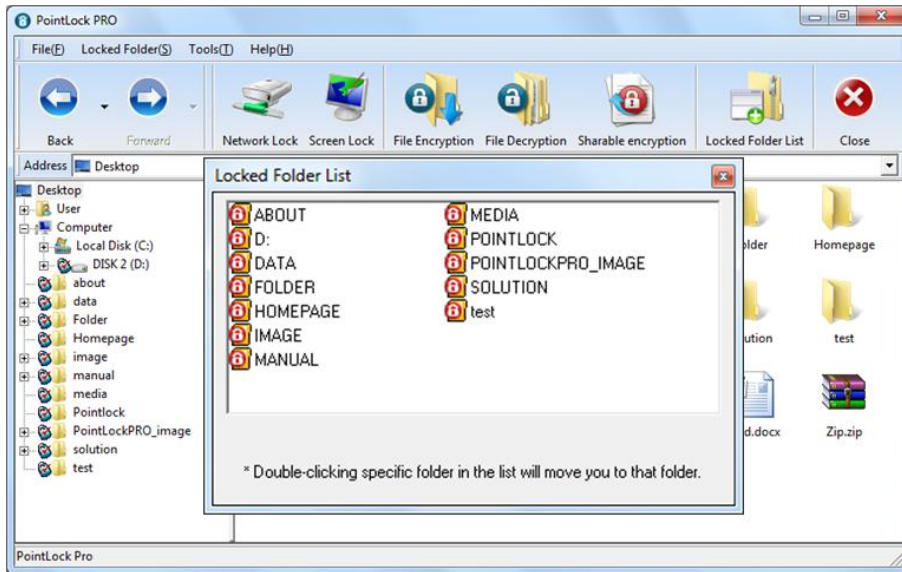
① Click **[Tool Bar]** > **[Locked Folder List]** icon.



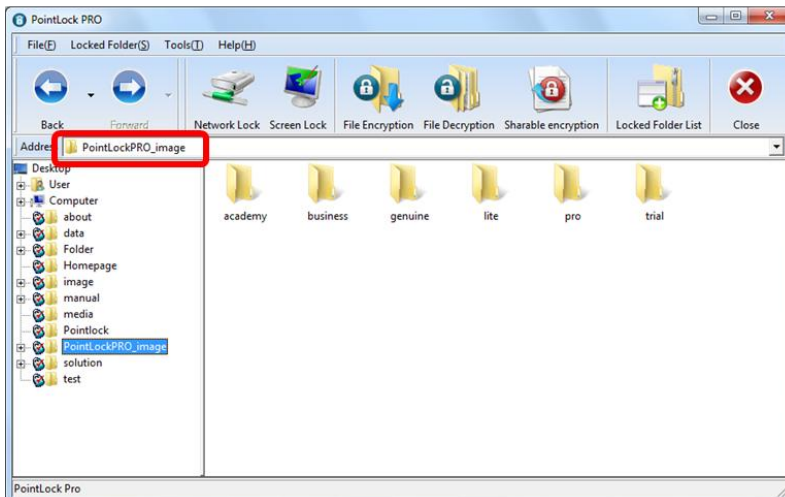
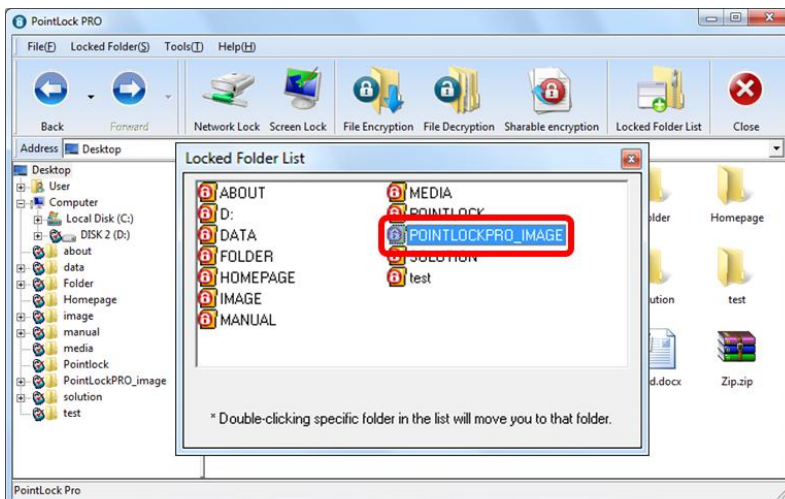
② Select **"Menu"** > **[Locked Folder(S)]** > **[View the Locked Folder List(V)]**.



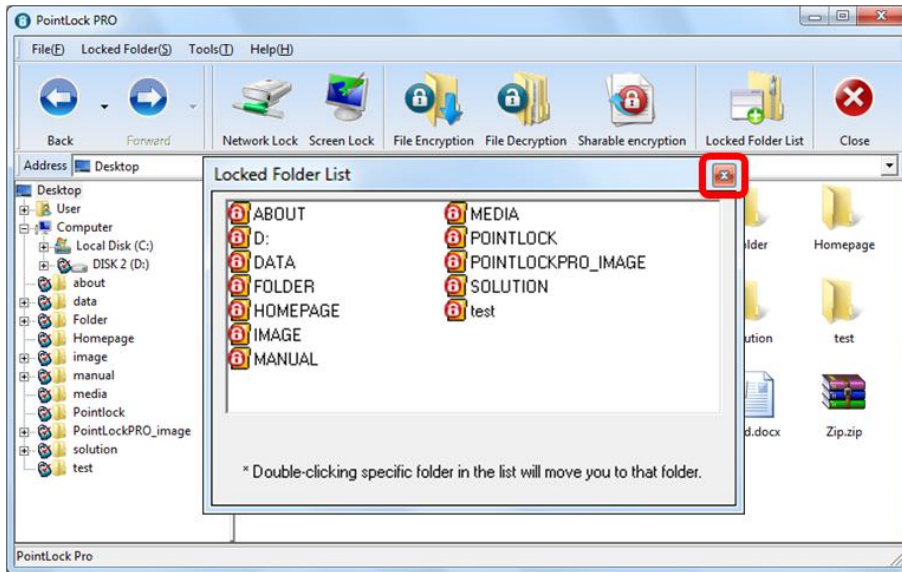
(6) You can see the folder list which is locked(hided) now.



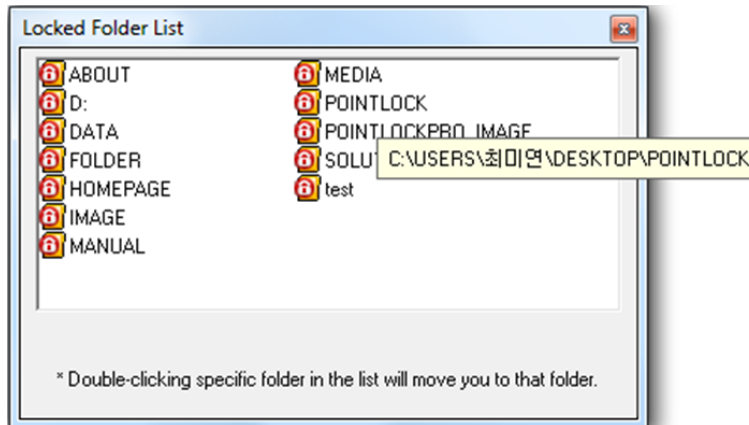
(7) Double-clicking the specific locked folder in the folder list will move to that folder.



(7) After seeing the secured folder list, close a window by clicking "x" located on the upper right corner of the window.

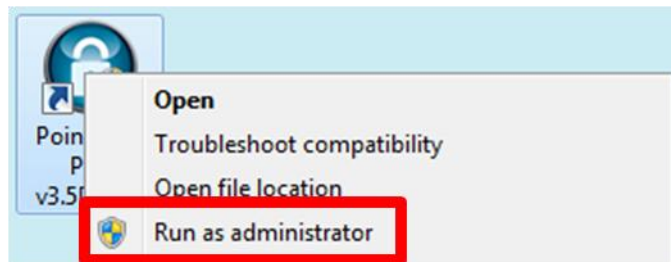


[Tip 1] You can see the directory of each folder by putting the mouse.



2. Unlock the Folder(s)

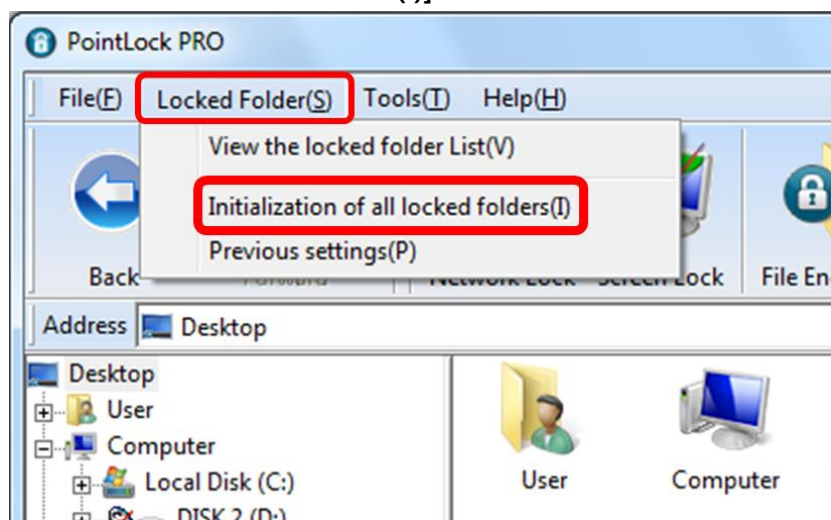
(1) Launch PointLock PRO on the wallpaper with administrative rights.



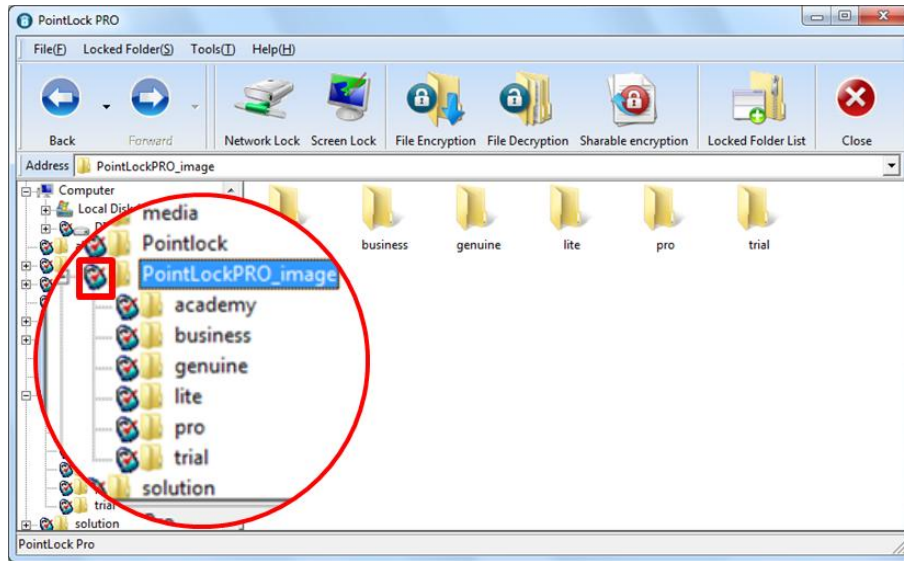
(2) Enter ID and password in the login window, and click **[OK]**.



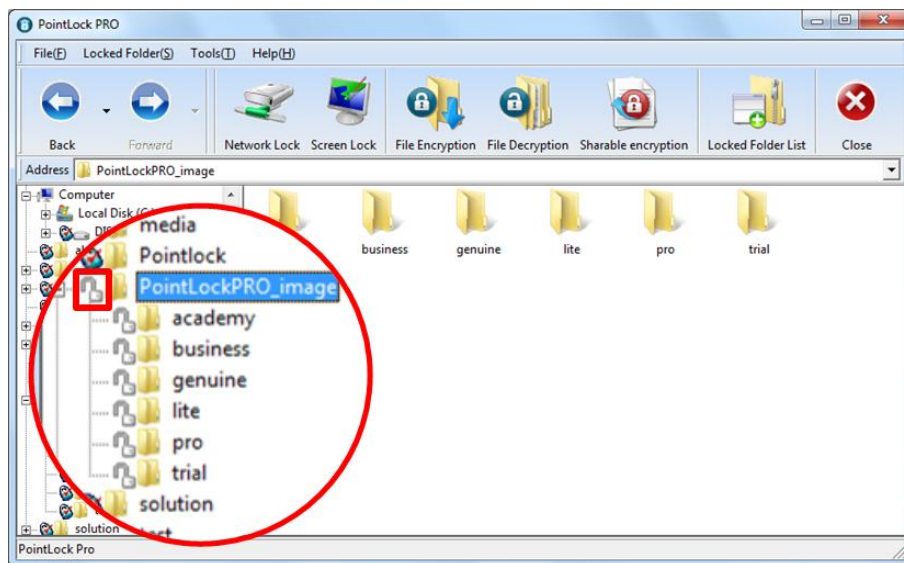
(3) When unlocking all the locked folders, select **"Menu"** – **[Locked Folder(S)]** – **[Initialization of all the secured Folders(I)]**.



- (4) For an individual revocation, one-click the **[Locked padlock icon]** of the folder you want to unlock in the folder tree located on the left of the program.



- (5) **[Unlocked padlock icon]** is created. At this state, seeing and accessing folders is possible.

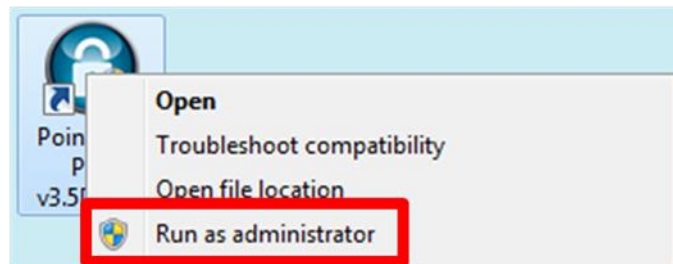


[Caution] If you unlock the parent folder, subfolders are automatically unlocked. (Vice versa)

3. Encrypt the File(s)

[Caution] – File encrypting is based on the ID and password set by the user. If an ID or password is changed, previously encrypted file can't be run by PointLock PRO. Therefore, you must decrypt all encrypted files first before changing the ID and password.

(1) Launch PointLock PRO on the wallpaper with administrative rights.

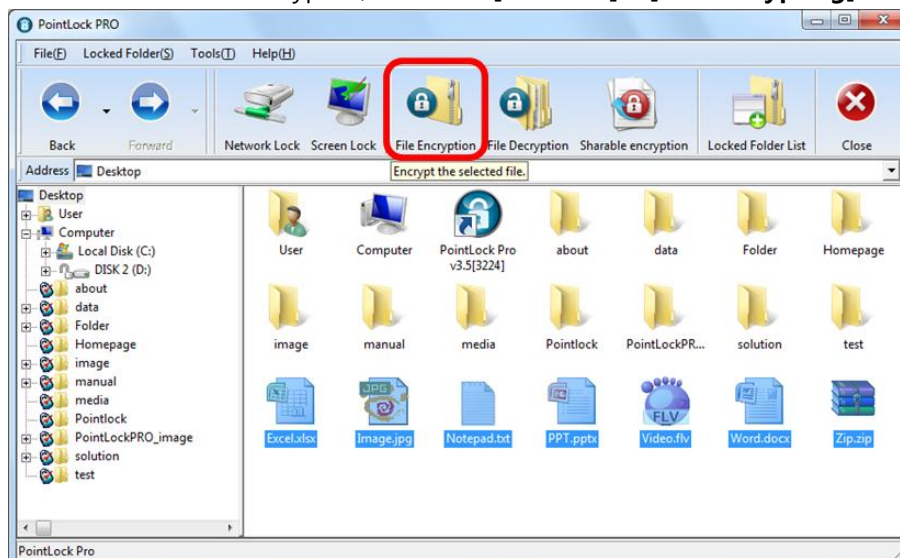


(2) Enter ID and password in the login window, and click [OK]

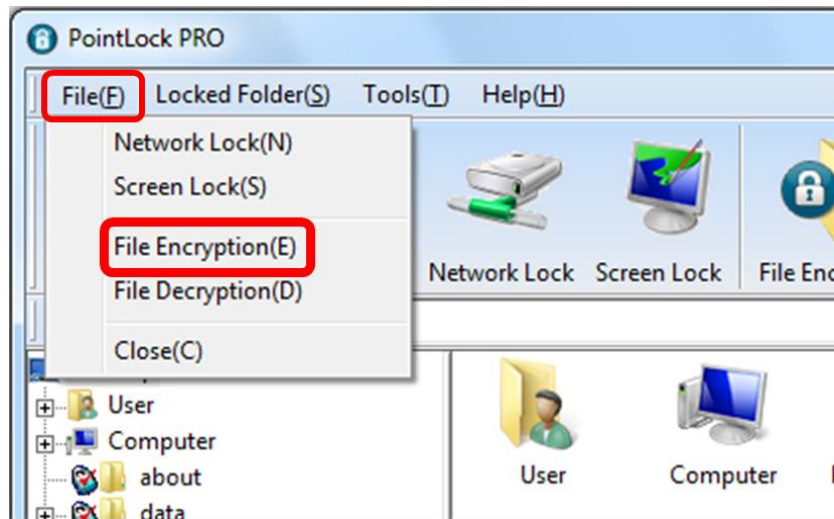


(3) There are two ways for file encrypting as follows

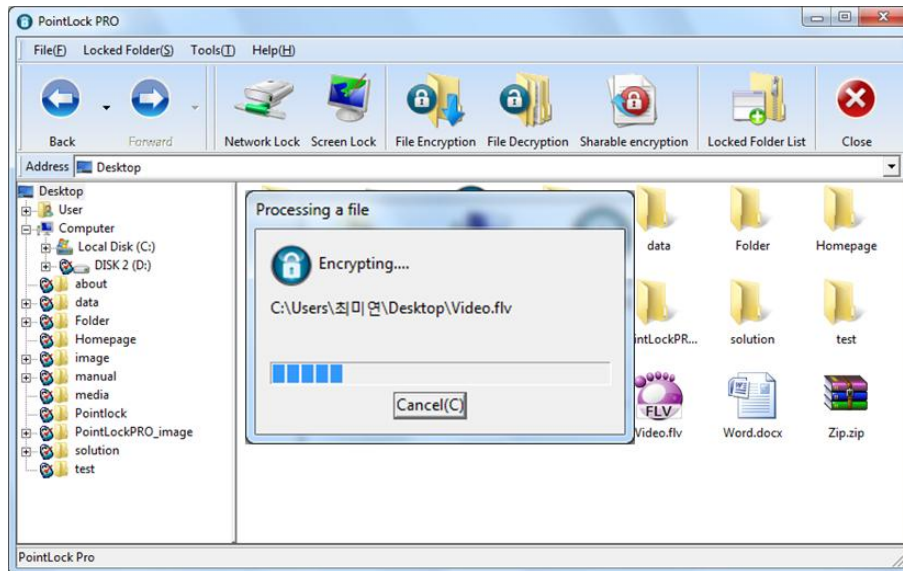
① Select the file to be encrypted, and click [Tool Bar] - [File Encrypting] icon.



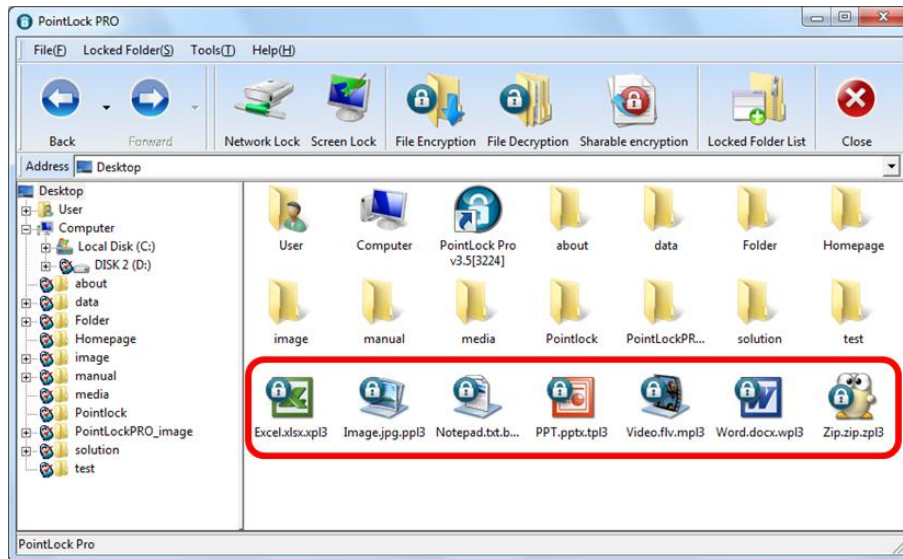
② Select "Menu" – [File Encrypting(E)].



(4) The encrypting for the selected file is in progress.



(5) A padlock shape will be created on the upper left side of the encrypted file icon.

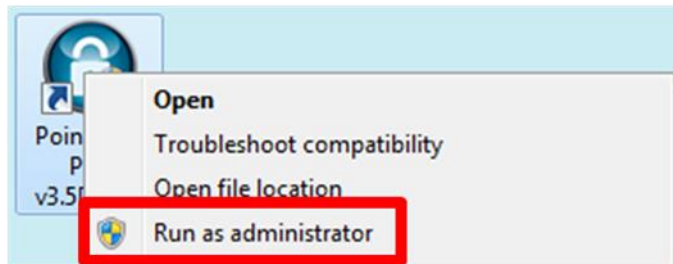


[Tip 1] All files can be encrypted and decrypted inside PointLock PRO.

[Tip 2] If you change the encrypted file inside PointLock PRO, there is no trouble of registering a password again since the encrypting is automatic.

4. Decrypt the File(s)

(1) Launch PointLock PRO on the wallpaper with administrative rights.

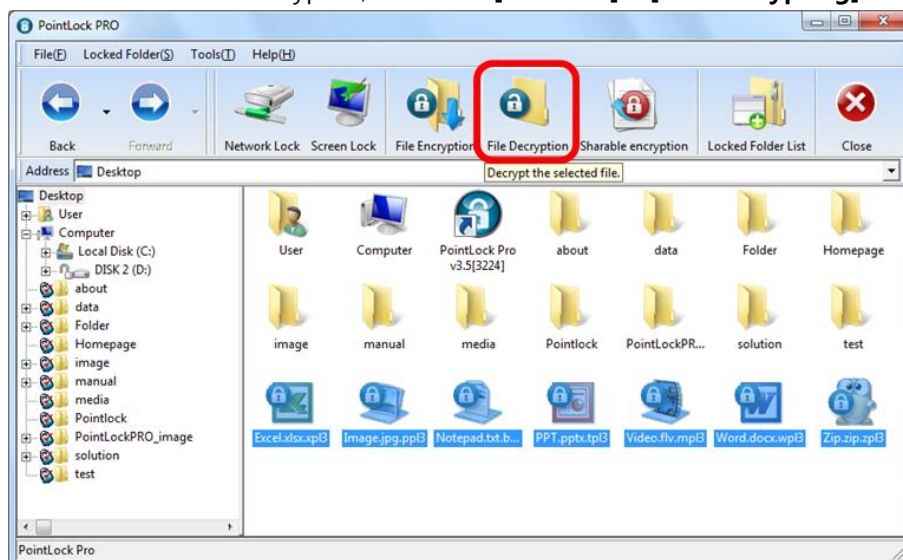


(2) Enter ID and password in the login window, and click [OK]

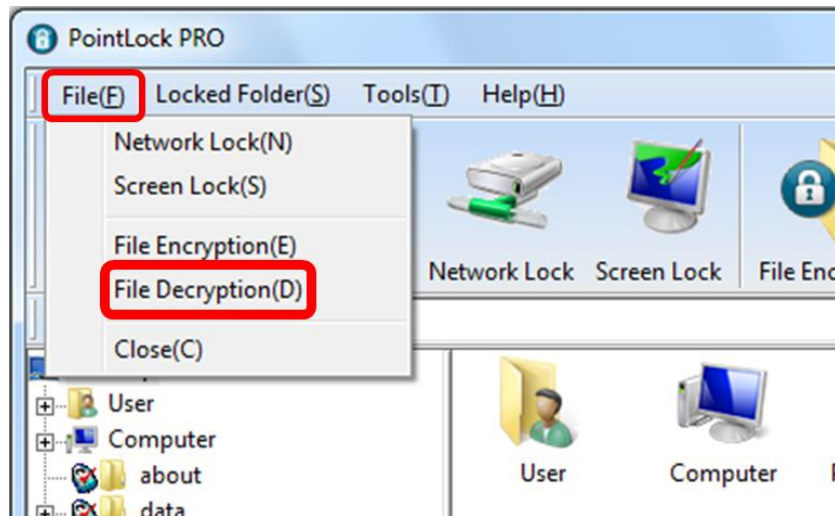


(3) There are two ways for file decrypting as follows

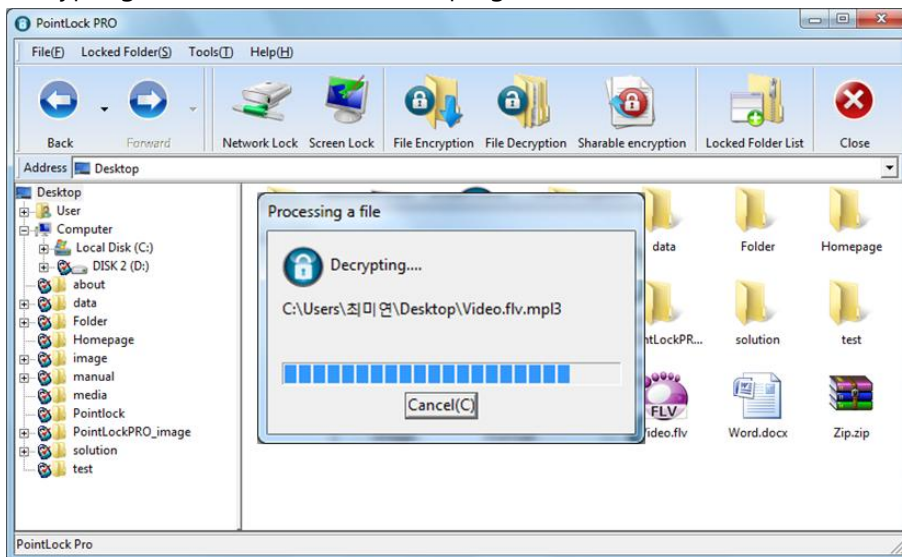
① Select the file to be decrypted, and click [Tool Bar] - [File Decrypting] icon.



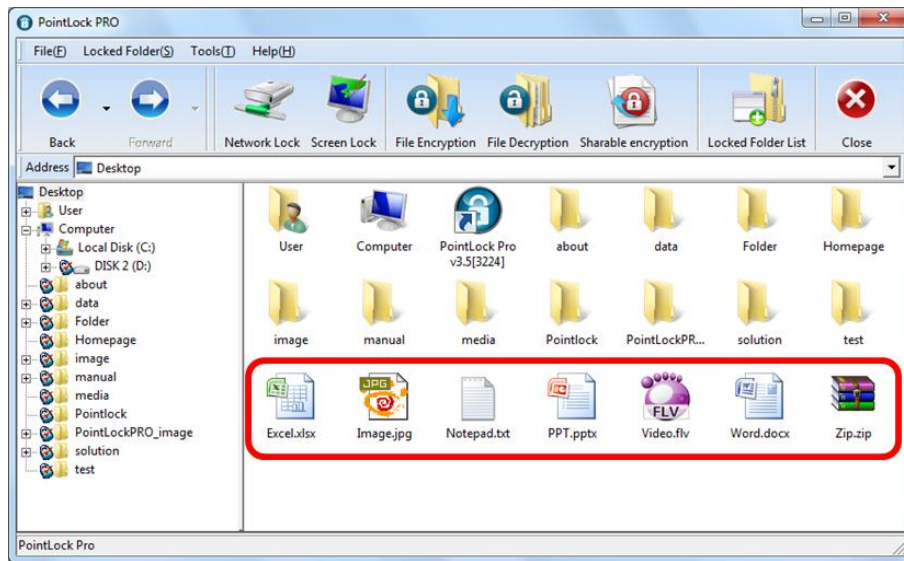
② Select "Menu" – [File Decrypting(D)]



(4) The decrypting for the selected file is in progress

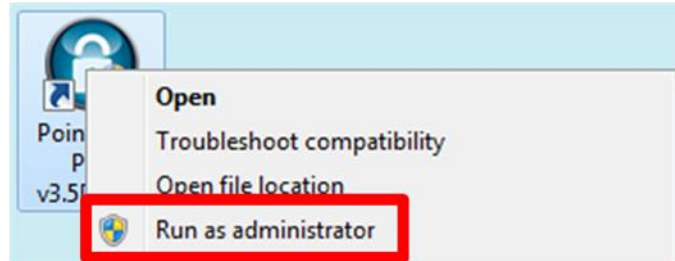


(5) If a decrypting is complete, you can see that the selected file has been decrypted as follows.



5. Encrypt the Sharable File

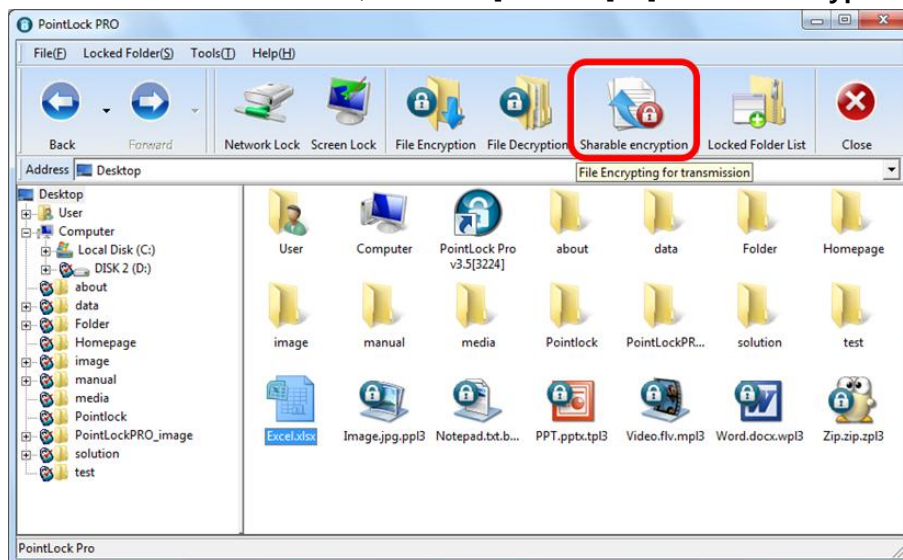
(1) Launch PointLock PRO on the wallpaper with administrative rights.



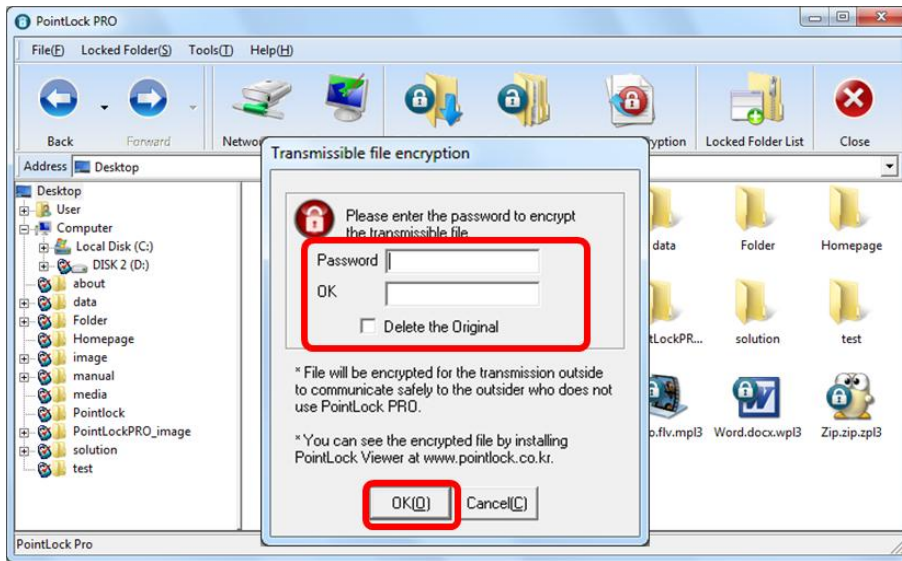
(2) Enter ID and password in the login window, and click **[OK]**



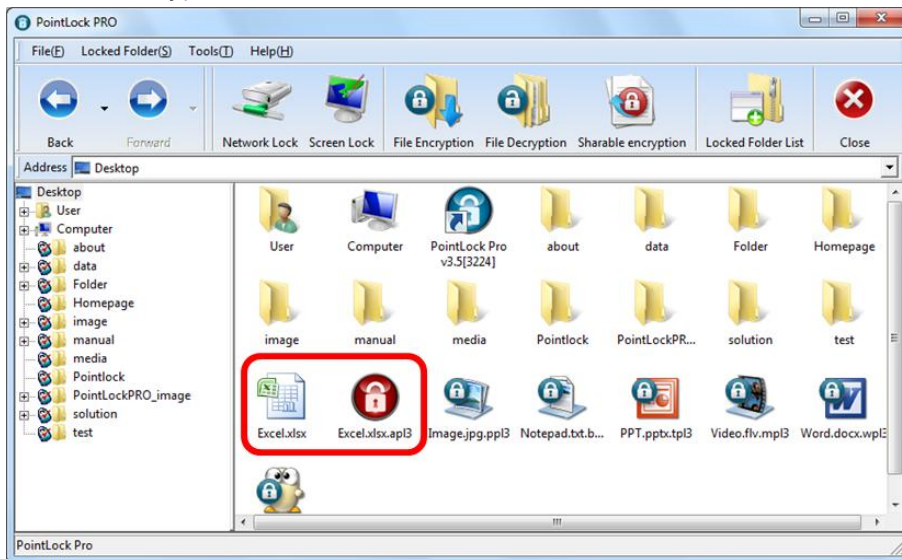
(3) Select the file to transmit outside, and click **[Tool Bar] - [Sharable Encryption]** icon.



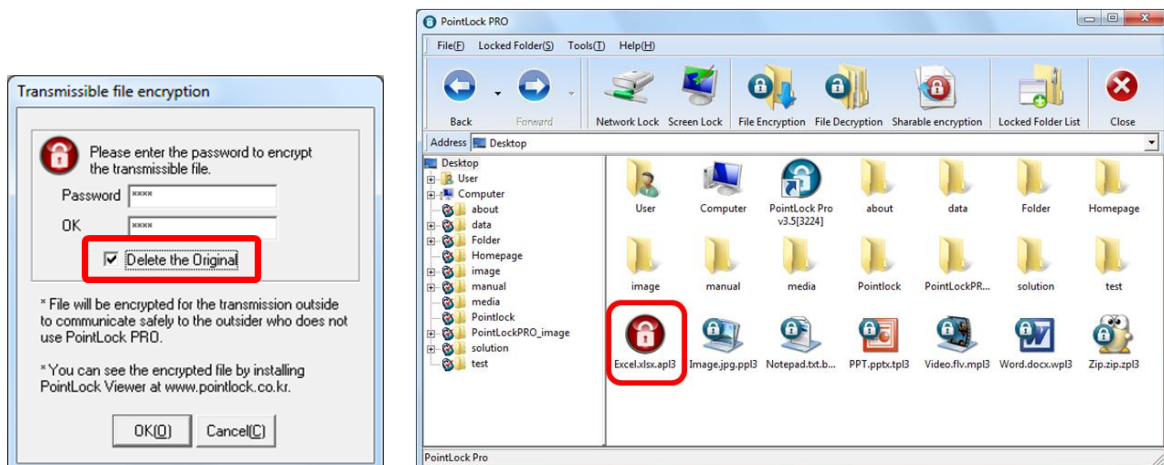
(4) Enter the identical password twice for accessing the file to be created, and click **[OK]**



(5) The sharable encrypted file is created.



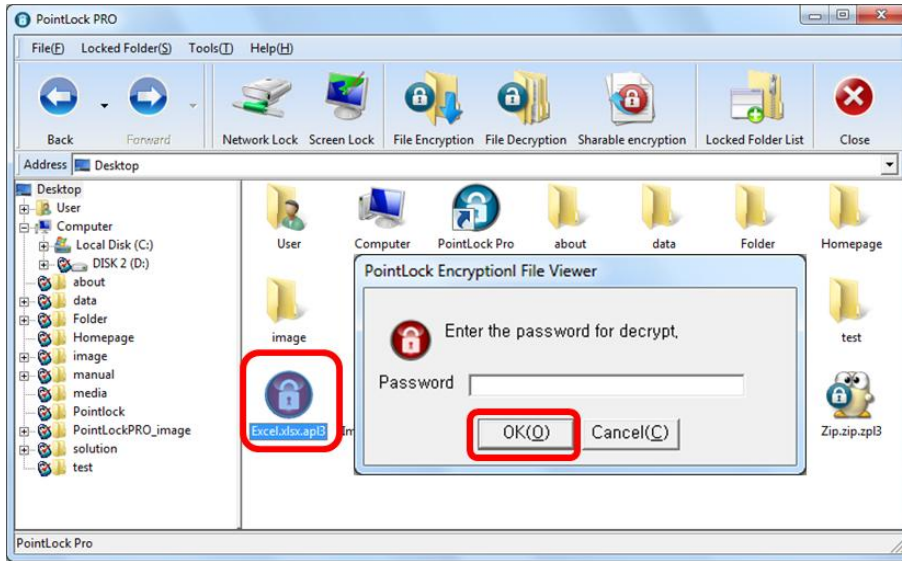
[Tip 1] If you check the "Delete the original", the original file can be removed.



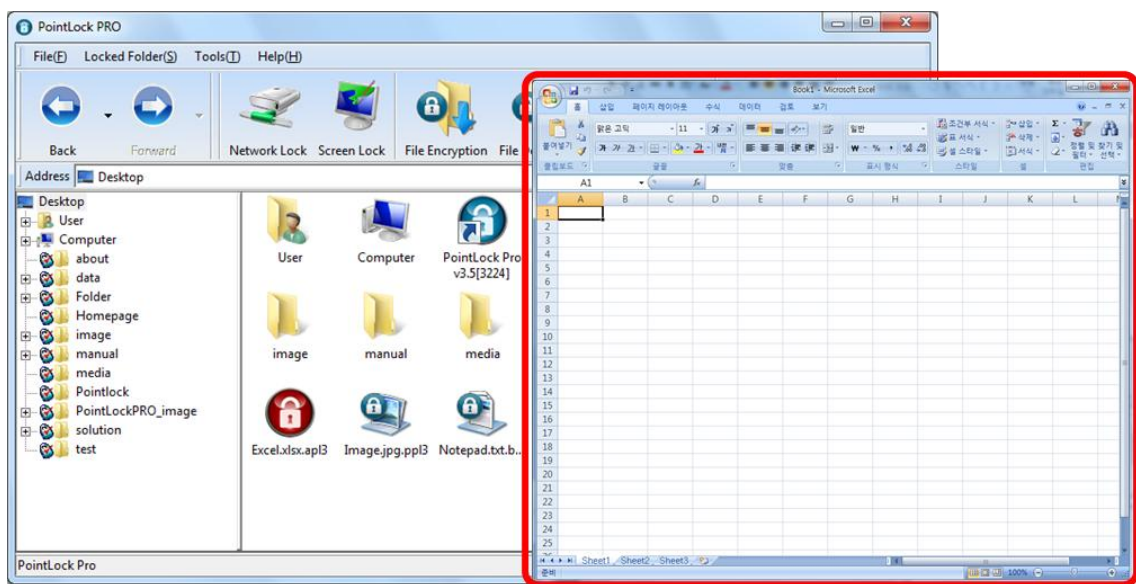
6. Decrypt the Sharable File

(1) If you want to launch the encrypted file from outside, download and install PointLock Viewer after connecting to the PointLock PRO homepage

(2) For decrypting, enter your password established at the time of sharable file creation, and click [OK].

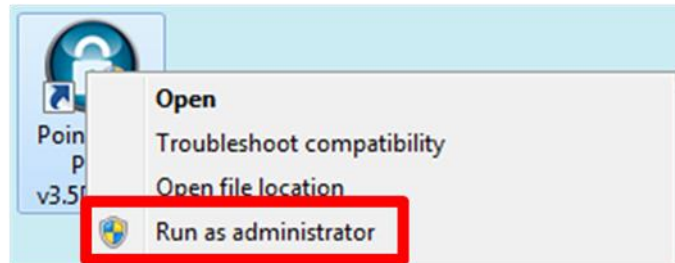


(3) The decrypted file is being launched. (※ Image below is a decrypted example of an encrypted file.)



7. Lock/Unlock the Network

(1) Launch PointLock PRO on the wallpaper with administrative rights.

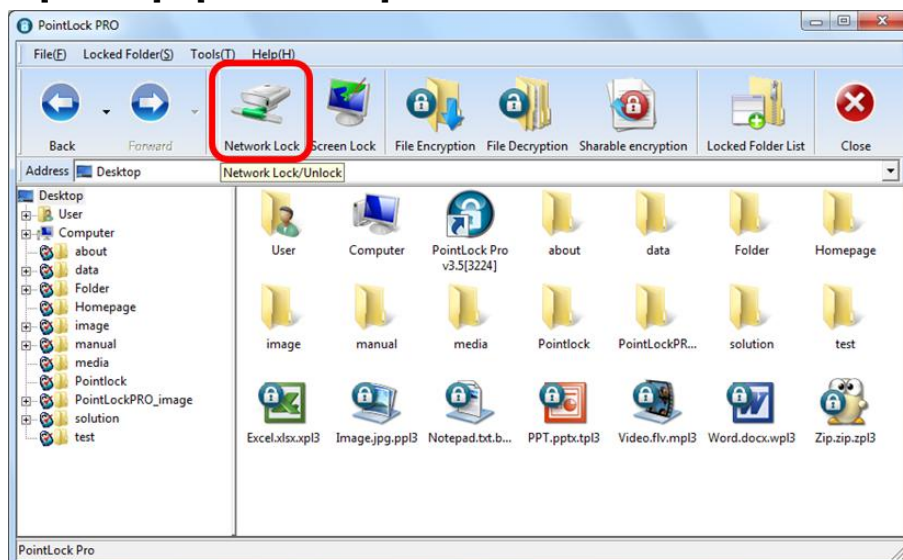


(2) Enter ID and password in the login window, and click **[OK]**.

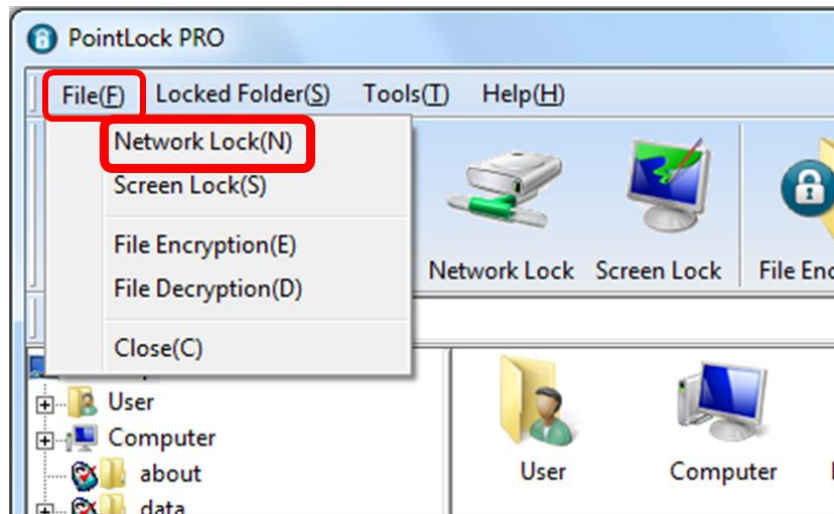


(3) There are two ways for network securing as follows.

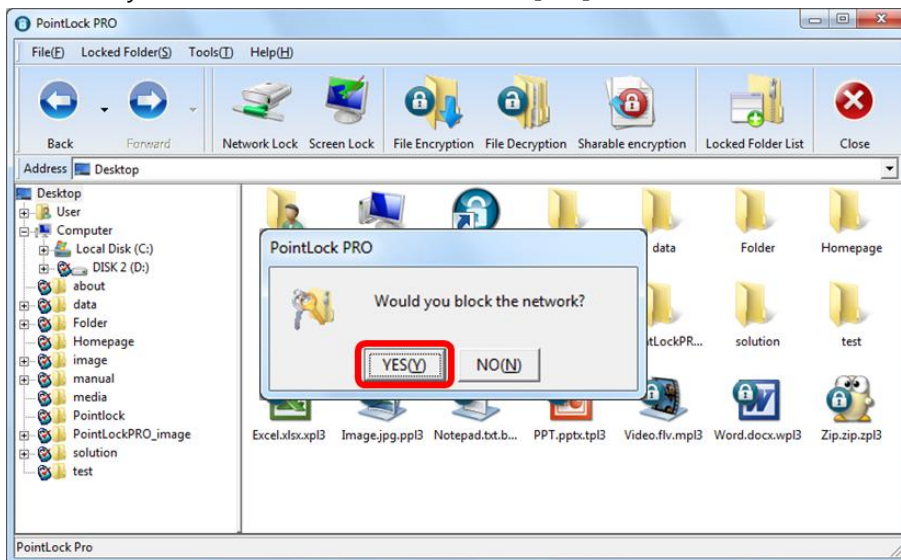
① Click **[Tool Bar] – [Network Lock]** icon.



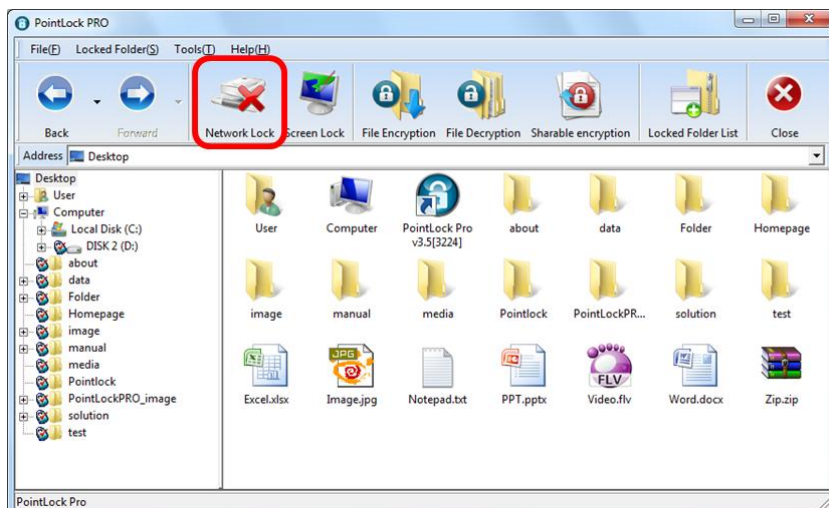
- ② Select "Menu" – [File(F)] – [Network Lock(N)].



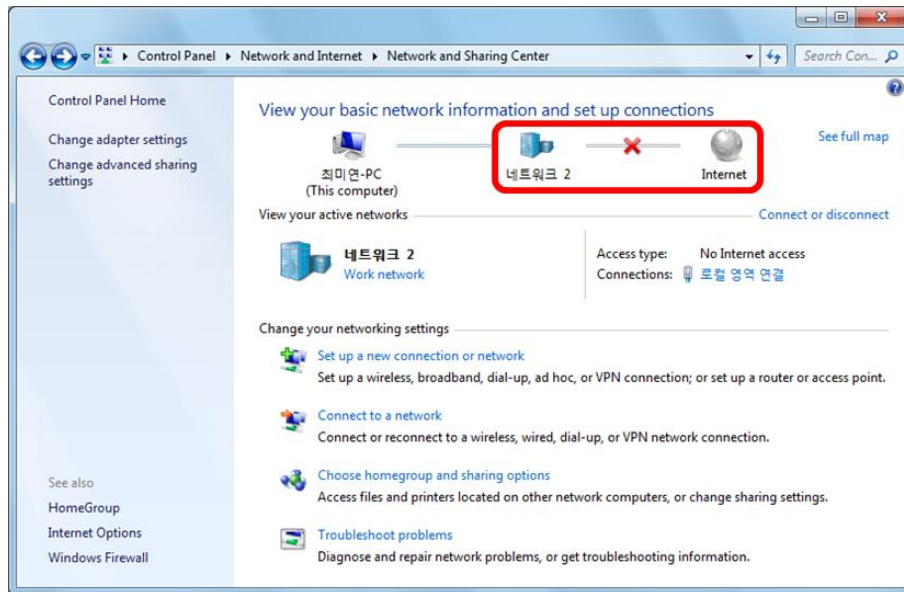
- (4) Confirm whether you will block the network. Click [Yes].



- (5) Network Lock icon is indicated with "X".

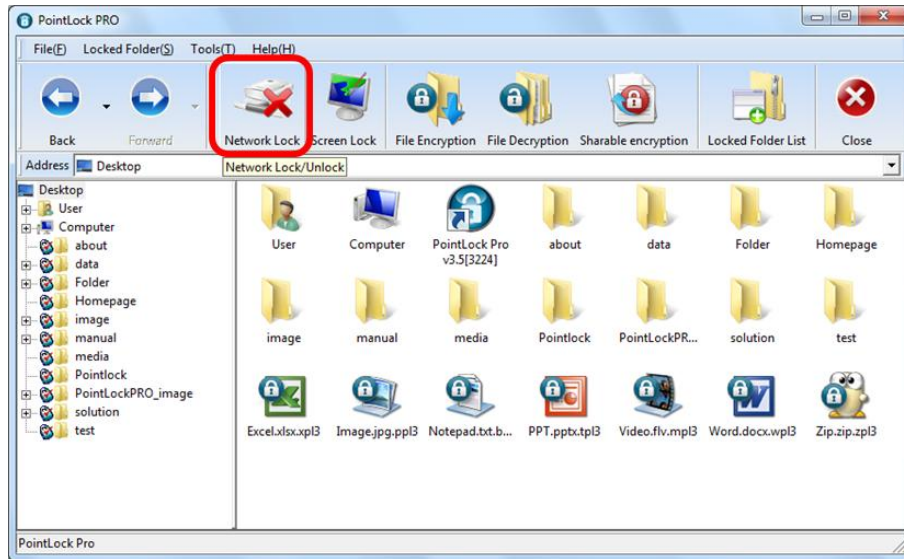


(6) You can see that internet connection is blocked in the network item. (ex. Windows 7)

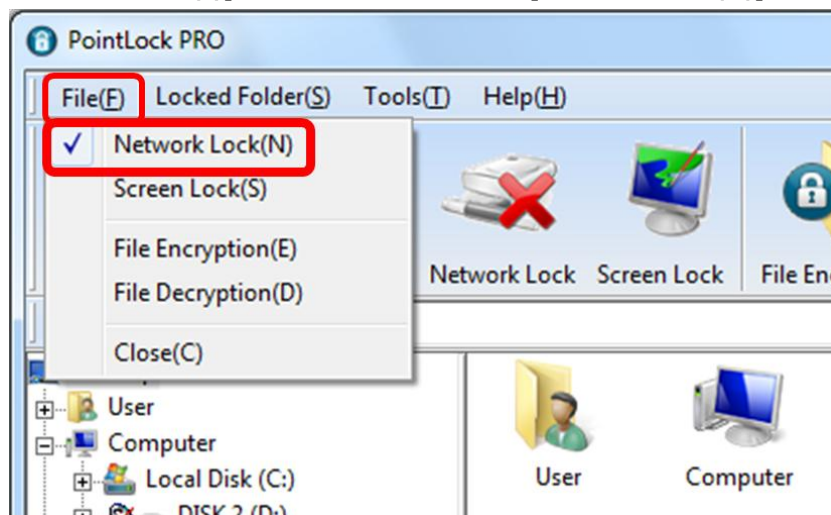


(7) There are two ways for network restoration as follows.

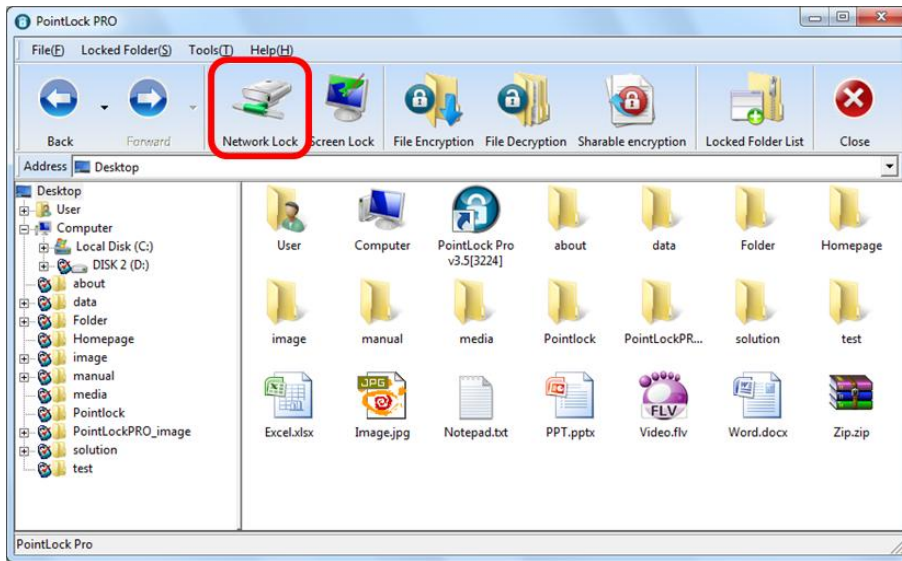
- ① Click **[Tool Bar] - [Network Lock]** icon.



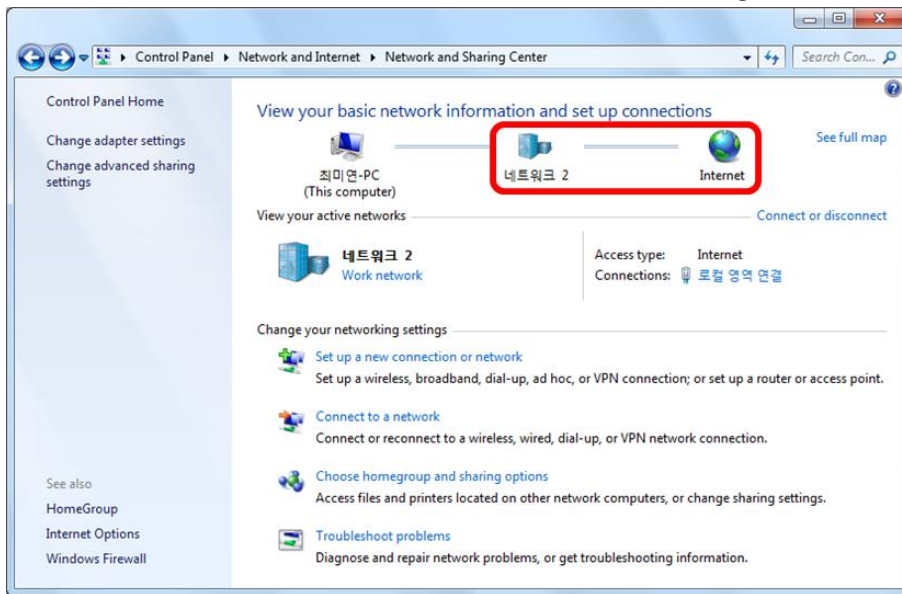
- ② Select **"Menu" – File(F) – Revoke the checked [Network Lock(N)]**.



(8) "X" mark on the Network Lock is disappeared, and the network is reconnected.



(9) You can see that the internet is connected in the network item. (eg. Windows 7)

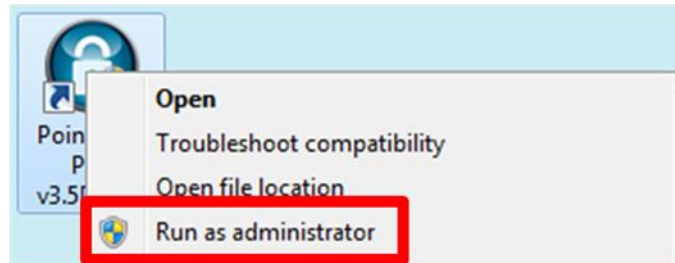


[Tip] Network Lock function works only while PointLock PRO is running.

One Click Security Program PointLock PRO

8. Set the Screen Saver and Revocation

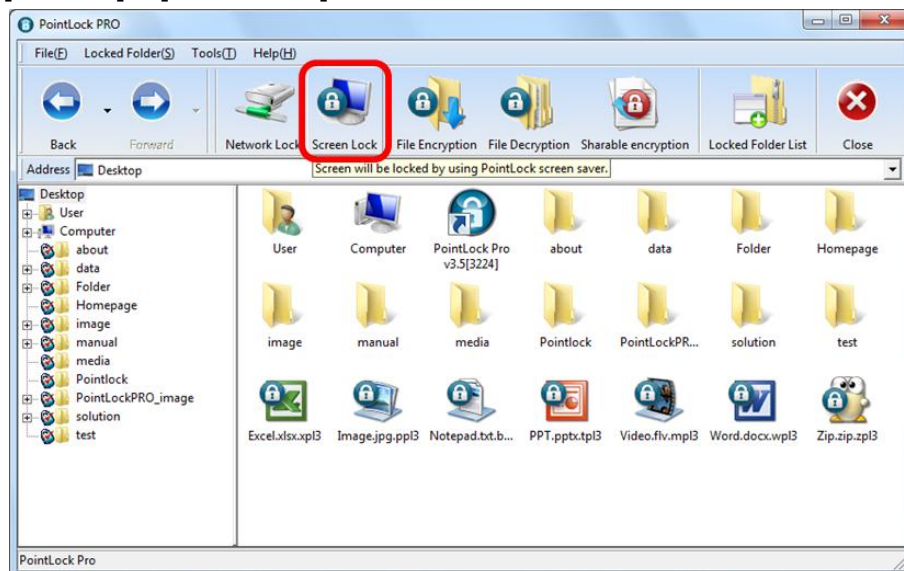
(1) Launch PointLock PRO on the wallpaper with administrative rights.



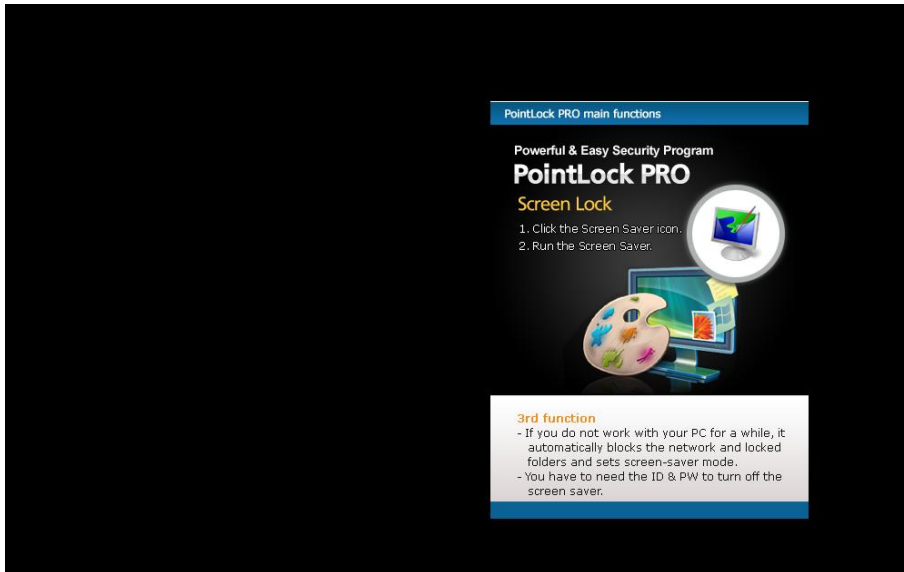
(2) Enter ID and password in the login window, and click **[OK]**.



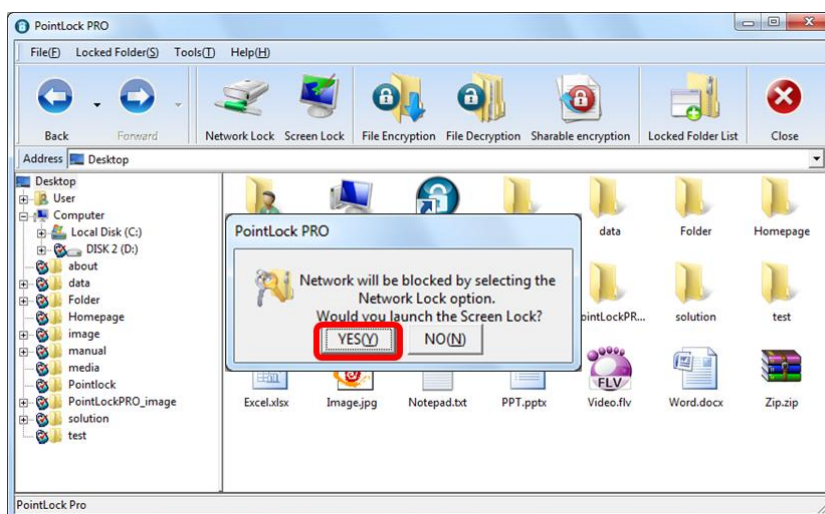
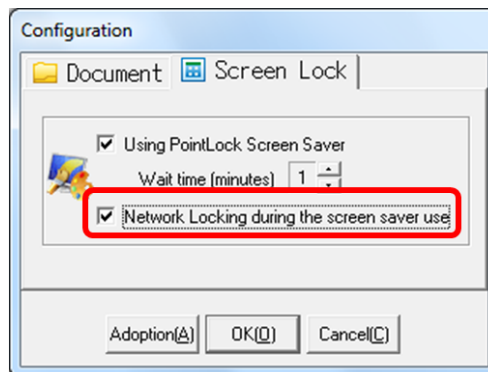
(3) Click **[Tool Bar] – [Screen Lock]** icon.



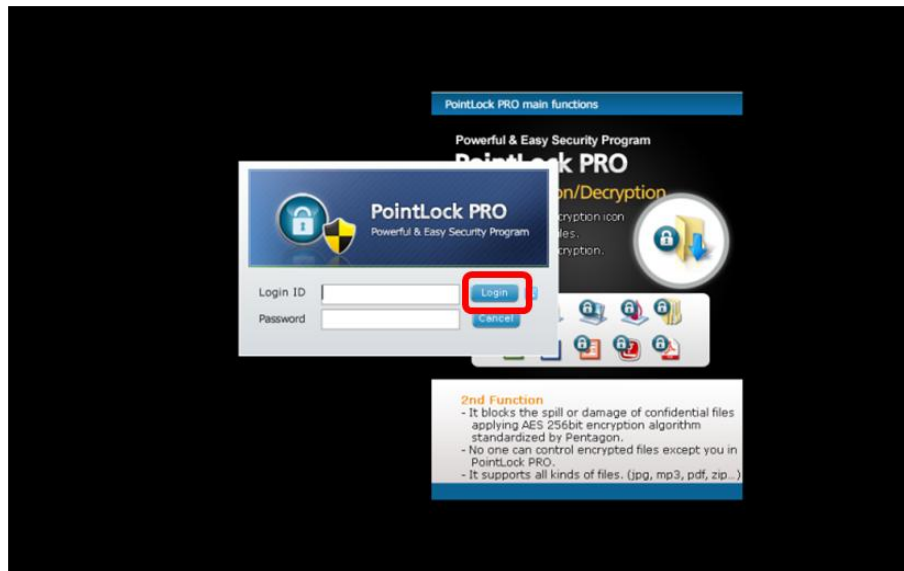
(4) If you click the **[Screen Lock]** icon, the screen saver displaying key features of PointLock PRO becomes visible.



[Tip] If you set up the [Menu] > [Configuration] > [Screen Lock] tap > Check [Network Locking during the screen saver use], network is also locked.

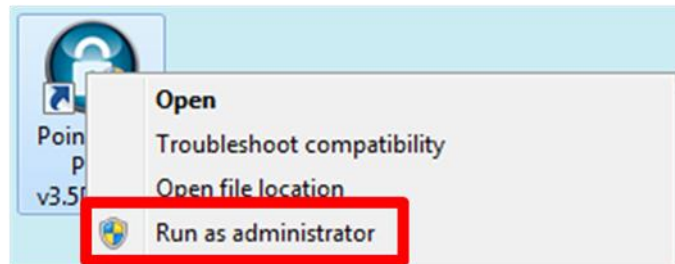


- (5) When you want to revoke the screen saving feature, move a mouse or hit any key on keyboard, then a login window will be created, and the screen saver will be revoked by entering user ID and password.



9. Configuration

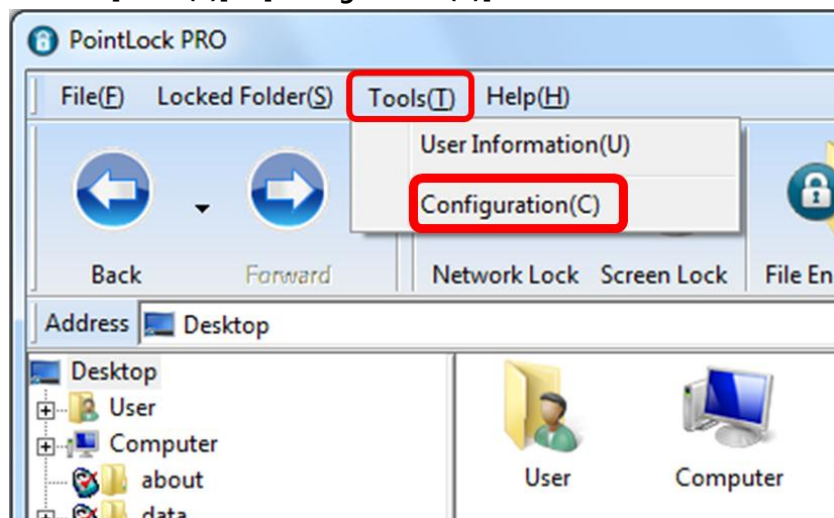
(1) Launch PointLock PRO on the wallpaper with administrative rights.



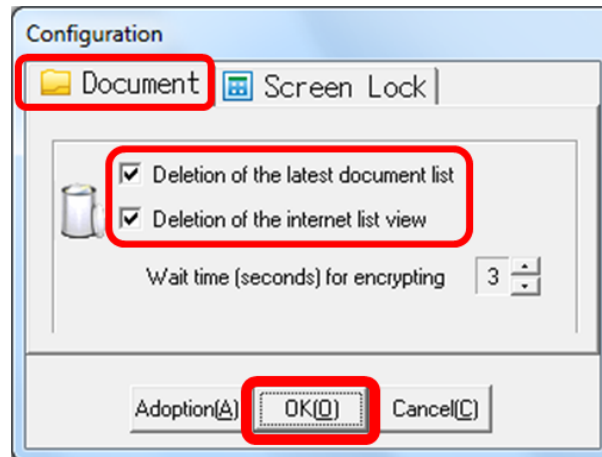
(2) Enter ID and password in the login window, and click [OK].



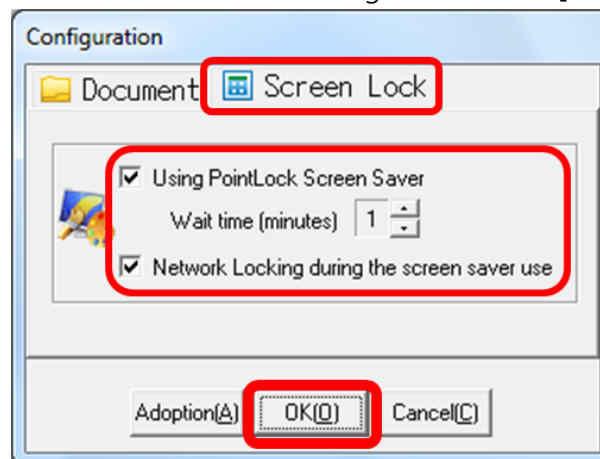
(3) Select "Menu" – [Tools(T)] – [Configuration(C)].



(4) You can delete the latest document list and the internet list in the **[Documents]** tab.



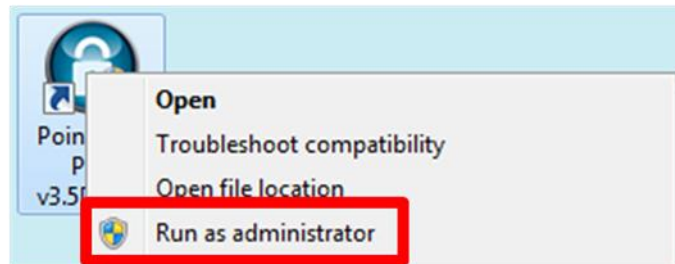
(5) You can have a PointLock PRO screen saver configuration at the **[Screen Lock]** tab.



[Tip] If you close PointLock PRO, the latest document list and the internet list view will be automatically deleted.

10. User Information

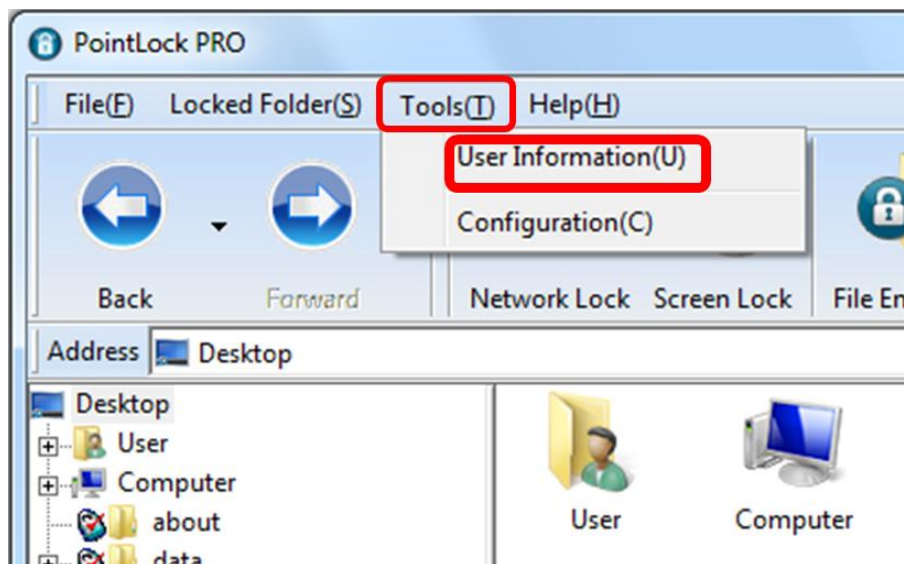
(1) Launch PointLock PRO on the wallpaper with administrative rights.



(2) Enter ID and password in the login window, and click [OK].



(3) Select "Menu" - [Tools(T)] - [User Information(U)].



(4) Enter new user information you want to change to.

① Enter a user ID. (ID must be four or more letters)

② Enter a new password to be changed.

(Password must be eight or more letters. You should enter the identical password twice)

③ Enter the hints reminding a new password.

④ User information is changed by clicking **[Change]**.

User Information

User ID: ID: 4 or more letters

Password: Password: 8 or more letters

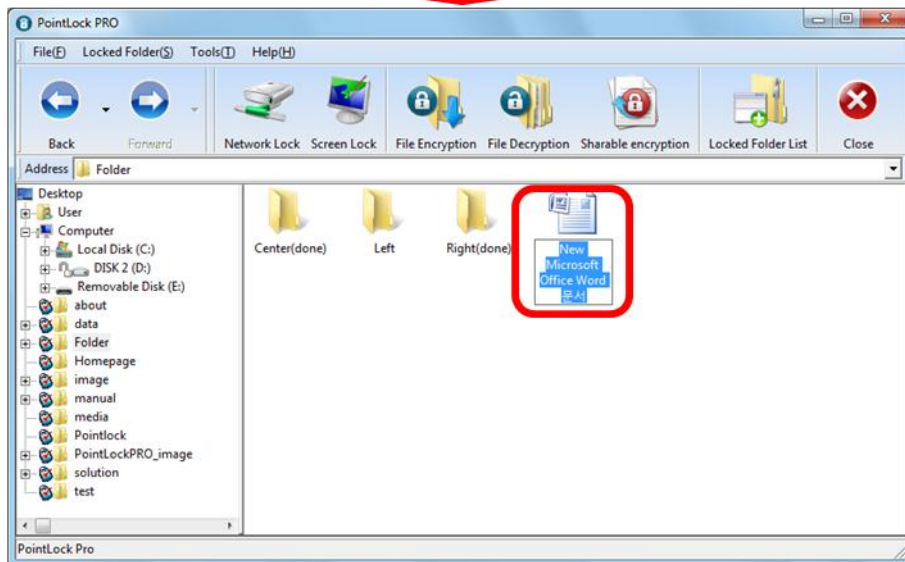
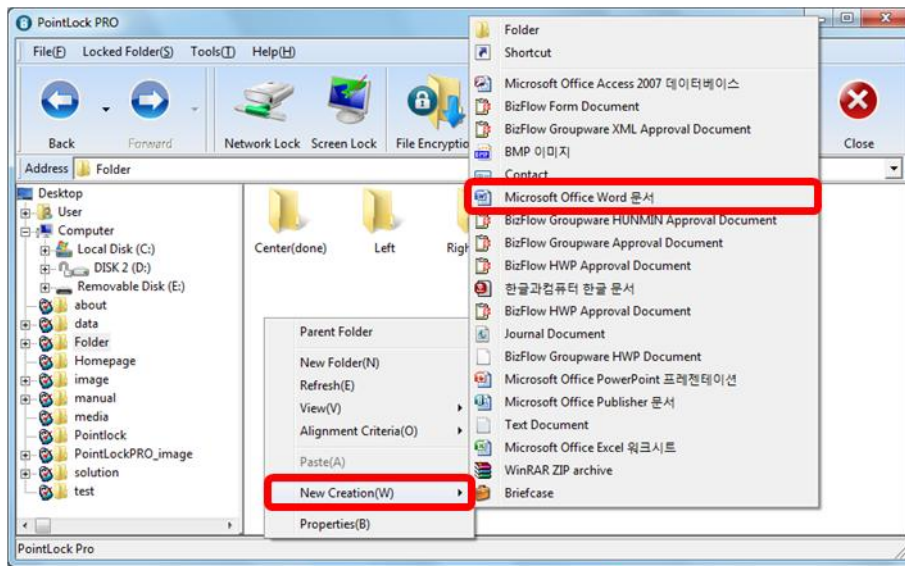
Confirm:

Reminding: Please enter the combination of alphabet

* Please enter by excluding the identical number pattern or continuous character sting on keyboard.

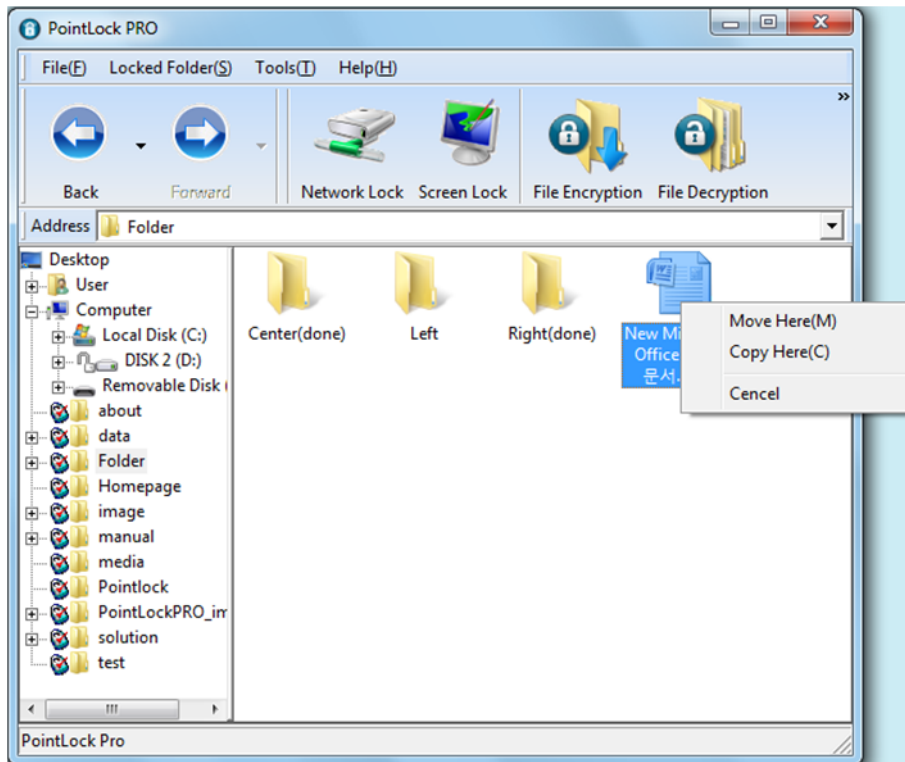
10. Creating a new file inside the locked folder (Shell function)

The features usable in Windows explorer can be used in **PointLock PRO**. After launching **PointLock PRO**, you can use various features of Windows explorer such as copy, cut, paste, view, alignment, properties, and creating new files by clicking the right mouse button just like in explorer.



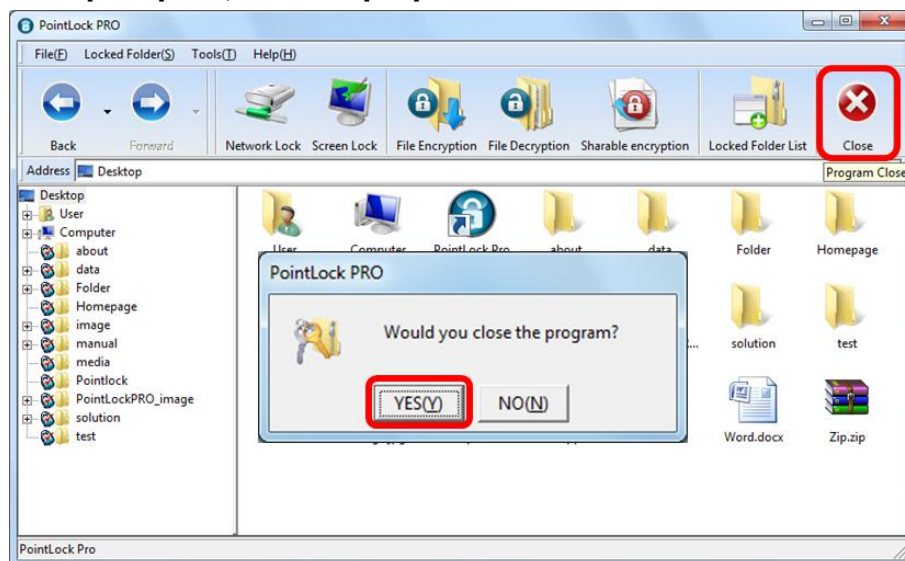
11. Free move and copy of files with Windows

- (1) Select a file in Windows, and bring it inside PointLock PRO by Drag & Drop.
- (2) Select move or copy inward PointLock PRO.
- (3) You can move and copy files freely between Windows and PointLock PRO.



12. Close the Pointlock PRO

- (1) Select the [Close] icon, and Click [YES].



■ **Caution**

※ Please refer to the following contents with caution about the PointLock PRO use.

- (1) If the user changes user ID or password after encrypting some files, that file can't be launched at all. You must decrypt all encrypted files before changing the ID and password.

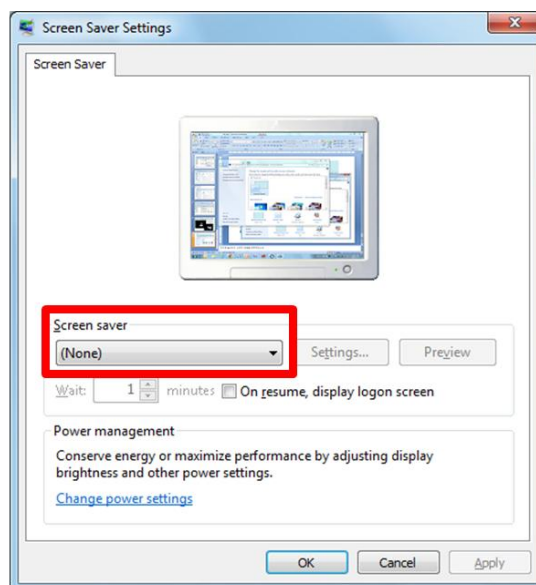
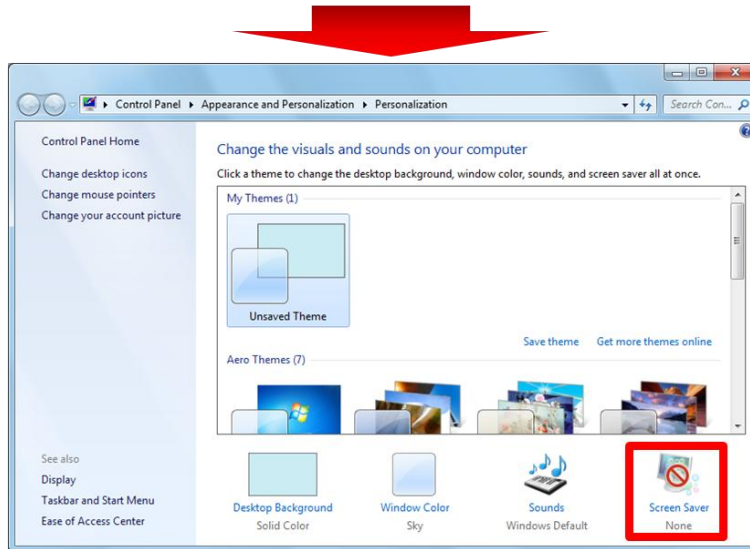
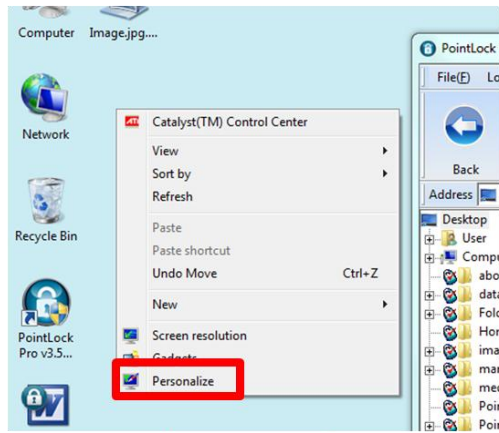
- (2) When installing the new operating system (OS)
 - If you reinstall the operating system with PointLock PRO installed, the configured value registered to the existing Windows will be changed, and the reinstallation of PointLock PRO will not proceed. Therefore, you must delete PointLock PRO first, and install PointLock PRO again after newly installing the operating system.

- (3) When installing on the other PC
 - Basically, one license of PointLock PRO can be installed only on one PC. Therefore, in case of installing PointLock PRO on the other PC while PointLock PRO is installed on the PC currently used, you must delete the installed PointLock PRO first.

- (4) When the maximum length of currently selected folder is over 260 characters, Implementation of the following features will be limited
 - Creating a new folder, Deletion, Changing a name, creating a new file, Folder Securing

(5) Modification of the screen saver settings

- If you install PointLock PRO to implement the screen Lock feature for security, the screen saver in Windows is forced to be configured as "Absence".



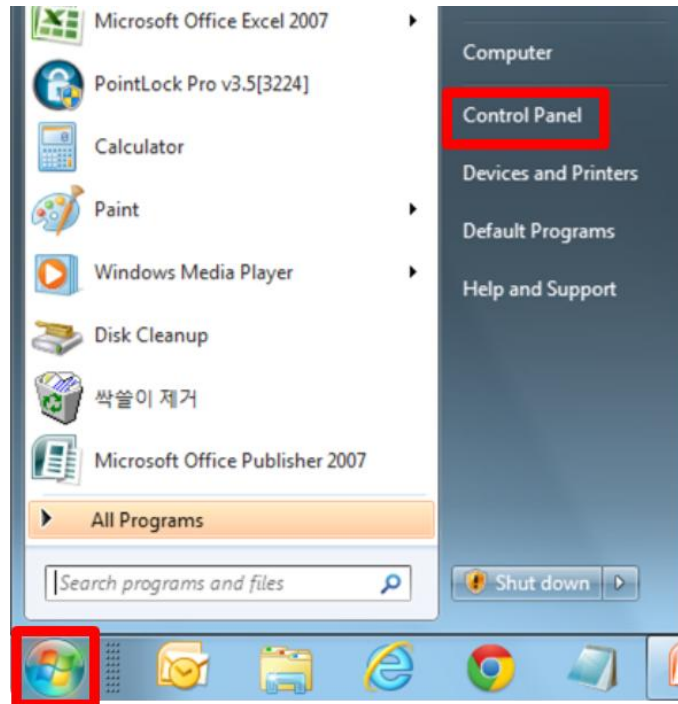
■ Deleting PointLock PRO

[Caution] – User ID and password are needed to uninstall PointLock PRO.

Without the login ID and password, program removal is impossible.

[Caution] – If you uninstall PointLock PRO, secured folders will be revoked automatically, but encrypted files will not be decrypted. Please decrypte all the encrypted files before uninstalling the program.

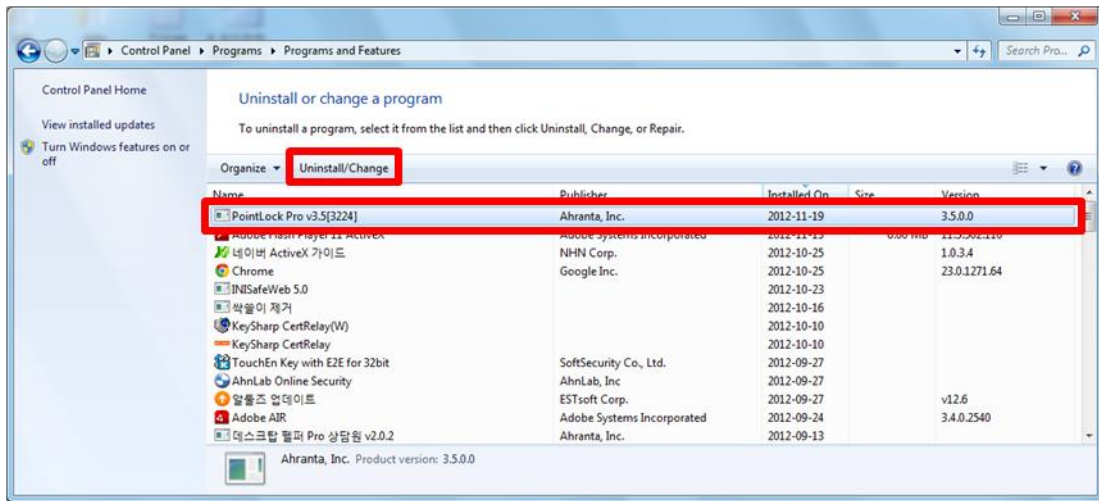
1. Select [Start] – [Control Panel]



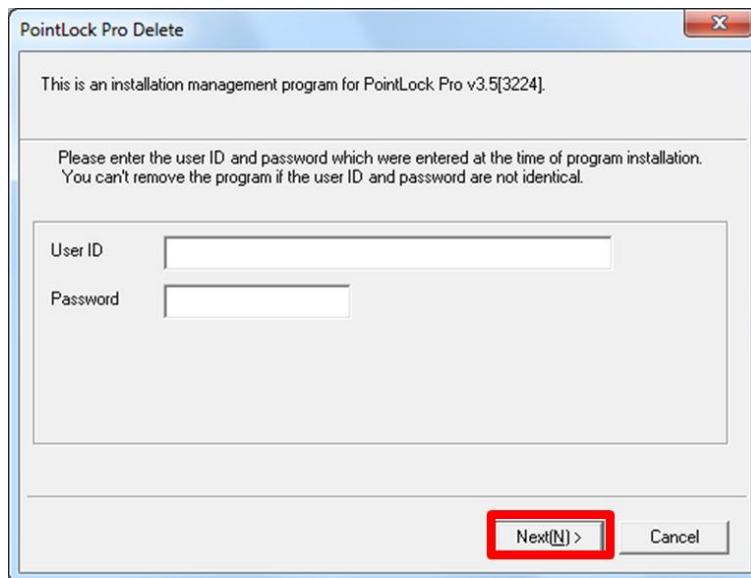
2. Select [Uninstall a program] (View by Category)



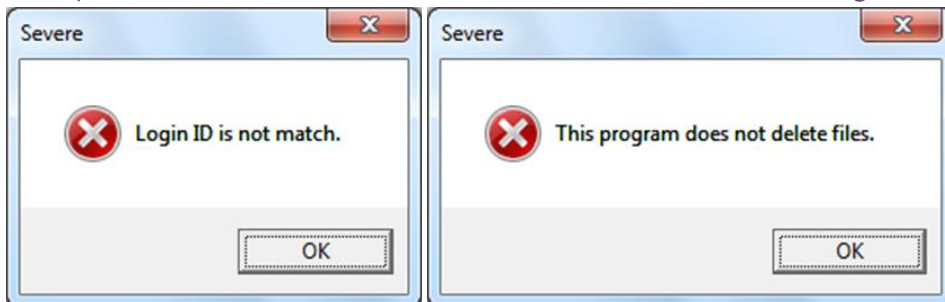
3. Select the installed **[PointLock PRO]**, and click **[Uninstall/Change]**.



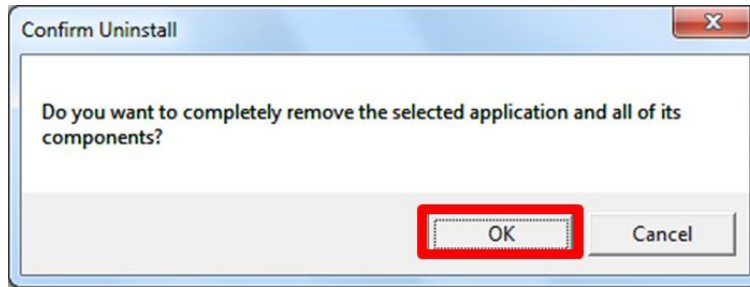
3. After Install Shield Wizard is launched, enter user ID and password in the PointLock PRO Delete and click **[Next]**..



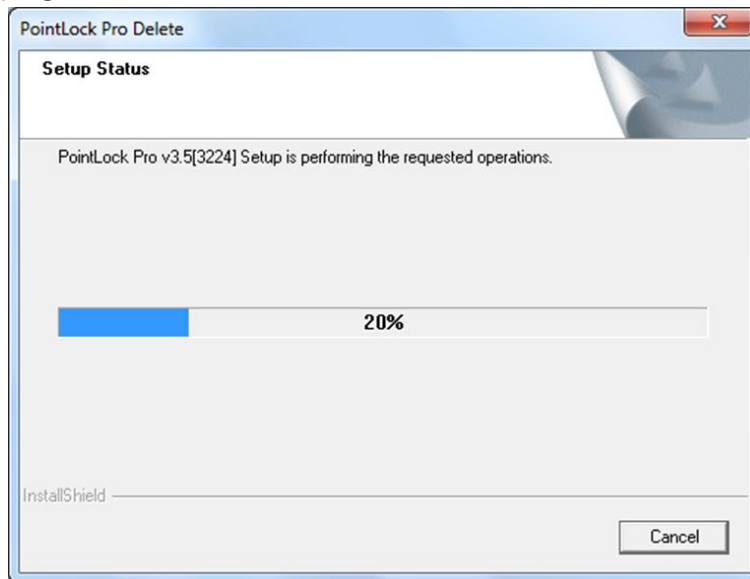
※ If user ID or password is not identical, it does not continue with the following error message.



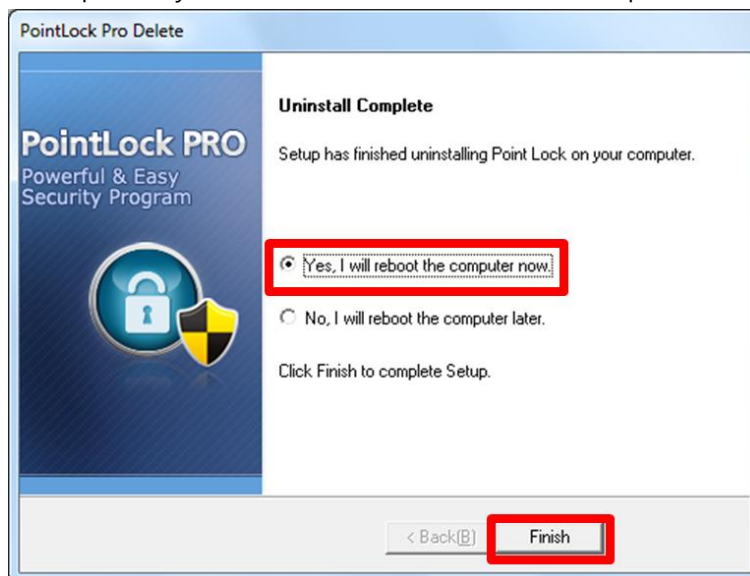
5. If you enter the correct user ID and password, program delete confirming window will be appeared. Please continue by clicking **[OK]**.



6. Deletion is in progress.



7. Deletion will be complete if you reboot the PC after the removal process is finished.



■ Technical Support

This user guide is made for people who use PointLock PRO for the first time.

If there are contents which can't be understood in this user guide or a problem occurs during the program usage, you can have a technical support through the following support method.

Email : support@ahranta.com, pointlock@ahranta.com